

EXECUTIVE EDUCATION GRADUATION PROGRAMME

NOVEMBER 2005

LG741
.W3G733
Nov. 2005
Suppl.
New Zealand
Collection



THE UNIVERSITY OF
WAIKATO
Te Whare Wānanga o Waikato

Contents

THE UNIVERSITY OF WAIKATO

0 8 NOV 2005

LIBRARY

<i>Welcome by the Vice-Chancellor</i>	2
<i>Brief History of the University of Waikato</i>	3
<i>University Officers</i>	4
<i>University Officers' Biographical Notes</i>	5
<i>The University Crest</i>	9
<i>Ceremonial Traditions</i>	9
<i>Ceremonial Robes</i>	9
<i>University of Waikato Academic Dress</i>	10
<i>Order of Proceedings – Founders Memorial Theatre</i>	11
<i>Qualifications to be Conferred at Founders Memorial Theatre, 1 November 2005</i>	12
<i>Graduands Reflections</i>	15
<i>God Defend New Zealand and Gaudeamus</i>	20

Welcome

Welcome to the University of Waikato's graduation ceremonies. Graduation is a highlight of the University year as it is a time when the University and the community come together to formally acknowledge and celebrate the achievements of their scholars. This makes it a happy and important occasion for graduands, their families and friends. For these reasons the University endeavours to make each ceremony part of a special day for all participants. I hope you enjoy graduation and I wish all graduands future success and happiness.



Professor Roy Crawford
Vice-Chancellor

A Brief History of the University of Waikato Te Whare Wānanga o Waikato

The University of Waikato/Te Whare Wānanga o Waikato celebrated its 40th anniversary in 2004. We embraced the opportunity presented by this significant milestone to reflect on our many achievements and successes since 1964, while at the same time looking ahead with great optimism to the future.

The University had its genesis in 1956, when a small group of visionary individuals began working towards the founding of a university for the people of the South Auckland region. A college, a sub-branch of Auckland University, was established in 1959 and in 1965, after opening its doors in 1964, the University of Waikato was officially opened by the then Governor-General, Sir Bernard Fergusson (later Lord Ballantrae).

From these modest beginnings, on what was largely farmland and with only a handful of temporary buildings and staff, the University of Waikato now employs approximately 1600 staff. We offer more than 200 qualifications and have approximately 13500 students, of whom more than 5500 complete a qualification annually. Our main campus in Hamilton covers some 65 hectares and provides comprehensive teaching, research and cultural facilities, student accommodation, banks and cafes, excellent sports and recreation amenities and extensive gardens.

The Hamilton campus is located close to a recently established Innovation Park, making us exceptionally well placed to contribute to the local and national economies by enhancing business capability in the region and increasing opportunities for the commercialisation of intellectual property.

The University of Waikato at Tauranga provides students in the Tauranga/Bay of Plenty area with the opportunity to complete qualifications locally, with many of the programmes being provided in co-operation with the Bay of Plenty Polytechnic. We also continue to deliver programmes in various locations throughout our region and more than 20 of our qualifications are available entirely or mostly through online study.

Co-operation and collaboration are fundamental principles to the way the University of Waikato operates. We are a member of the Tertiary Education Alliance, alongside the Bay of Plenty Polytechnic, Tairāwhiti Polytechnic, Waiariki Institute of Technology, Western Institute of Technology and Wintec. This alliance is a highly successful example of a co-operative approach to education planning and provision. It provides clear academic pathways through agreed articulation, credit and contractual teaching arrangements, and as a result, students in the region can take advantage of a variety of tertiary opportunities that would not otherwise be so accessible.

We define our region in terms of the tribal boundaries of the 16 iwi affiliated to Te Rōpu Manukura. It extends from Manukau down to Wanganui, across to Kahungunu, along the East Coast up to Hikurangi, continuing up to the Bay of Plenty, to the Coromandel and back to Manukau. We sit at the heart of a community of strong regional partnerships and take pride in the extent to which we reflect and serve the strengths and interests of our region.

From its inception the University has always been at the forefront of initiatives in support of Māori aspirations, working closely with local iwi, particularly Tainui, to make the University accessible to Māori students and to foster an environment of success. Today we are proud to have the highest proportion of Māori students of any New Zealand university.

We continue to foster a culture of internationalisation, measured through the diversity of our student and staff profiles, the support and celebration of that diversity, a long-standing pride in our reputation for the pastoral care of our international students, and the measures we take through curriculum, programme design and our global networks and connections to international influences.

We are proud of our evolution into a truly New Zealand institution which, as our motto reflects, supports our country's nation-building policies and reflects our nation's identity.

University Officers

Chancellor

Mr J Gallagher CNZM, O.St.J, JP

Pro Chancellor

Mr J Jackman B.Ag.Sci *Lincoln*

Vice-Chancellor

Professor R Crawford BSc(Hons) PhD DSc *Belfast* FIMechE FIMMM FEng

Deputy Vice-Chancellor (Academic)

Professor P G Koopman-Boyden CNZM BA MA DipEd *Massey*

Deputy Vice-Chancellor (Research)

Professor R Bedford BA MA *Auckland* PhD *Australian National University, Canberra* FRSNZ

Pro Vice-Chancellor (International)

Professor S P Quick BAppSc *Victoria, Australia* BEd *Monash, Australia* MA *Western Ontario, Canada* PhD *Ohio State University, USA*

Pro Vice-Chancellor (Māori)

Professor T M Reedy BA MA *Auckland* MA PhD *Hawaii*

Pro Vice-Chancellor (Public Affairs)

Professor S R Leitch MA PhD *Auckland*

Pro Vice-Chancellor (Resources) and Pro Vice-Chancellor (University of Waikato at Tauranga)

Associate Professor A Neilson BSocSc MSocSc *Waikato* MSc *York (UK)*

Dean of Management

Professor M J Pratt BA (Hons) *Sheffield* MCom *Witwatersrand* DCom *South Africa* ACA FCA

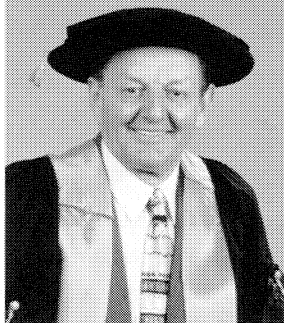
Executive Director, International Relations

Associate Professor E Weymes BSc(Hons) *Leicester* PhD *Cranfield*

University Officers' Biographical Notes

Chancellor

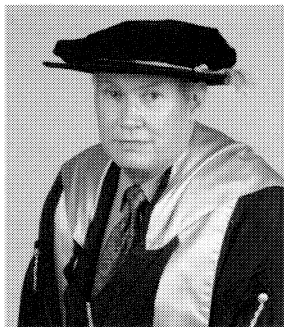
Mr John Gallagher CNZM, O.St.J, JP



As a business leader John Gallagher brings a wealth of business and community experience to the University Council. He is a shareholder and director of one of New Zealand's most successful export companies, the Gallagher Group. As an ardent supporter of growth and development in the community, John is actively involved with numerous community organisations including Habitat for Humanity, Rotary, St John's Ambulance and WEL Energy Trust. He served as the Deputy Mayor of Hamilton City from 1997 to 1998 and twelve years as a City Councillor. As a local body politician he has been instrumental in promoting and driving many of the city facilities and services. John was first elected to the University Council in 1990 as the representative of the Employers' Association. John is also a member of the Finance Committee and Deputy Chairman of the University of Waikato Foundation.

Pro Chancellor

Mr John Jackman B.Ag.Sci Lincoln



John Jackman was raised on a sheep and cropping farm at Cheviot, North Canterbury. He graduated in Agricultural Science from Lincoln College and joined the then Department of Agriculture in Hamilton in 1968.

Initially a financial adviser to the farming sector, he became involved in major change situations – initially in farming but this soon extended into new technologies and agricultural policy. He played significant roles both in implementing and dismantling the Government interventions in agriculture of the 70's and 80's. During this time he also took a 4-year overseas posting as Counsellor (Agriculture) at the NZ High Commission, London.

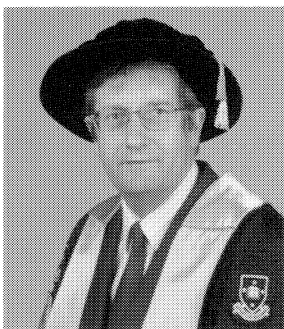
He returned from overseas to a position in the Directorate General of the Ministry of Agriculture and Fisheries where he was at the interface between the Ministry and the Minister. In 1987 the MAF undertook a major restructuring and with it John changed his career path. He moved from Head Office to a frontline regional role and was then promoted to Director of North Region of MAFTech based at Ruakura with responsibility for 40 percent of MAF's research and consultancy. This was a period of intense entrepreneurial activity as science and advisory services sought to become commercially viable. The next step was the formation of the Crown Research Institutes. John convened the establishment unit for AgResearch – the largest CRI. He was appointed foundation Deputy CEO of AgResearch.

John resigned from AgResearch in 1995 to form a consultancy practice under the name of Foresight Consultancy. He undertook overseas assignments for the World Bank, however his primary interest lay with the Waikato Innovation Park and related projects.

In 2000 he was appointed to the Council of the University of Waikato as a Government nominee. He currently chairs the Finance Committee of the University.

Vice-Chancellor

Professor Roy Crawford BSc(Hons) PhD DSc Belfast FIMechE FIMMM FREng



Professor Crawford was born in Lisburn, Northern Ireland and has spent most of his academic and professional life in Northern Ireland. He is a Professor of Mechanical Engineering, whose primary research interest has been in the mechanical properties and processing behaviour of plastics. From 1999 - 2001 he was Professor of Mechanical Engineering at the University of Auckland, and has on-going research and business interests in New Zealand associated with the establishment of a new polymer research centre there. His previous position was the Senior Pro Vice-Chancellor at Queen's University, Belfast, with special responsibility for Research and Development. For the last 3 years, Professor Crawford has been a senior member of a small team that manages all aspects of Queen's University. He has published 7 books and over 270 papers and has been a member of numerous government panels and research grant committees in the UK. He is a member of a number of professional organisations and a Fellow of the Royal Academy of Engineering. He is directly involved in a wide range of professional activities and organisations, including consultancies and company directorships. He has had substantial and very successful experience in the Research Assessment Exercise in the UK, having led his own school, the School of Mechanical and Process Engineering. He has had wide experience both in the UK and in New Zealand raising international funds for research purposes. Married with two sons and one daughter, Professor Crawford is a UK national and is also a permanent resident of New Zealand.

Deputy Vice-Chancellor (Academic)

Professor Peggy G Koopman-Boyden CNZM BA MA DipEd Massey



Professor Koopman-Boyden held the position of Dean of the School of Social Sciences from 1995 and was appointed the Dean of Faculty of Arts and Social Sciences in 1999 which she held until 2003. Since then she has held the position of Deputy Vice-Chancellor (Academic) at the University of Waikato. Previously she was the CEO for the New Zealand Institute of Social Research and Development, and lectured at the University of Canterbury. She was also the co-founder and Director of the Southern Cross Language Institute in Christchurch. Professor Koopman-Boyden has undertaken sociological, demographic and policy research on ageing, and has chaired or has been a member of many national committees on social policy, family, women, the elderly and complementary and alternative health. These include the New Zealand Planning Council, National Council on HIV/AIDS, and the Gerontology Association. She is a Life Member of Age Concern (Canterbury) and was awarded a CNZM (Companion of the NZ Order of Merit) for services to the elderly.

Deputy Vice-Chancellor (Research)

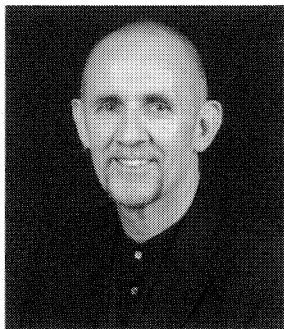
Professor Richard Bedford BA MA Auckland PhD Australian National University, Canberra FRSNZ



Professor Bedford is currently Deputy Vice-Chancellor (Research) at the University of Waikato where he has been Professor of Geography since 1989. In 2000 and 2001 he was Director of the University's satellite campus in Tauranga. He has undergraduate and graduate degrees from the University of Auckland and his PhD was completed in 1971 in the Research School of Pacific Studies at the Australian National University. He is a specialist in migration studies and since the mid-1960s has been researching processes of population movement in the Asia-Pacific region. During the 1980s Professor Bedford was the Convenor of the Population Monitoring Group of the former New Zealand Planning Council. He was awarded the NZ 1990 Medal for Services to New Zealand. In 2000 he was elected to the Fellowship of the Royal Society of New Zealand. He is a member of the New Zealand National Commission for UNESCO and Chair of the Commission's Social Sciences Sub-Commission. He is also the New Zealand Immigration Service's representative on an inter-governmental International Metropolis Project, and the Royal Society of New Zealand's contact point with the International Human Dimensions of Global Environmental Change Programme. In 2001 he was appointed by the Minister of Immigration as academic adviser to the Ministerial Advisory Group on Immigration.

Pro Vice-Chancellor (International)

Professor Shayne Quick BAppSc Victoria, Australia BEd Monash, Australia MA Western Ontario, Canada PhD Ohio State University, USA



Professor Quick is currently the Pro Vice-Chancellor, International at the University of Waikato and directs the University's international strategy. He is responsible for the University's International Centre, Foundation Studies and the Language Institute. He is also an Adjunct Professor at the Democritus University of Thrace, Greece. Formerly he was the Director of International Programs for the Faculty of Business, University of Technology, Sydney. He has taught at universities in Australia, Canada, Greece and the USA.

Among his many publications are his co-authored book *Strategic Sport Marketing* which is now in its second edition and has been published in four languages. He currently sits on the editorial board of three international sport management journals, is on the National Faculty Advisory Board for the Sports Business Management Program at the University of Central Florida and is on the Faculty Advisory Committee for the NBA's Orlando Magic.

He is also the Past President of the Sport Management Association of Australia and New Zealand. In 2001 Professor Quick was awarded a Diploma by the Bulgarian Olympic Committee for his outstanding contribution towards the successful participation of the Bulgarian Olympic Team in the Sydney 2000 Olympic Games.

Pro Vice-Chancellor (Māori)

Professor Tamati Reedy BA MA Auckland MA PhD Hawaii



Professor Reedy is the Pro Vice-Chancellor with responsibilities for Māori development in the University. Professor Reedy was the foundation Dean and Professor of the School of Māori and Pacific Development at the University of Waikato, created in 1996. Professor Reedy gained his MA in English at Auckland University, and an MA and Doctorate in Linguistics at the University of Hawaii. He was also a Fulbright Scholar at the University of Alabama. Prior to his appointment as Dean in 1996, Professor Reedy was the Chief Executive and Secretary for the Māori Affairs Department, New Zealand. He was awarded the 1990 New Zealand Medal. With his wife Tilly, he has managed his own consultancy business in education and training in the public and private sector until his appointment at Waikato University. He is Ngāti Porou.

7

Pro Vice-Chancellor (Public Affairs)

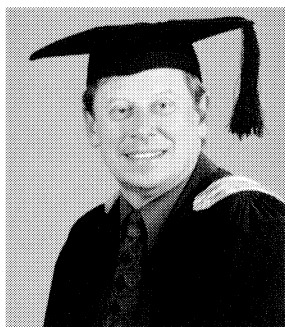
Professor Shirley R Leitch MA PhD Auckland



Professor Leitch is Professor of Corporate Communication and Pro Vice-Chancellor of Public Affairs at the University of Waikato. Her research is primarily in the areas of identity, brands and public discourses. Her work is published in a variety of marketing, communication and management journals including; *European Journal of Marketing*, *Public Relations Review*, *Human Relations*, *Organisation Studies*, *Australian Journal of Communication*, *International Studies in Management and Organisation* and *Corporate Communications*. She has been at Waikato University since 1990 and has previously held posts at the Universities of Massey, Victoria and Auckland.

Pro Vice-Chancellor (Resources) and Pro Vice-Chancellor (University of Waikato at Tauranga)

Associate Professor Alan Neilson BSocSc MSocSc Waikato MSc York (UK)

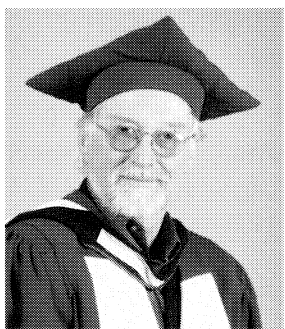


Associate Professor Neilson was educated at Tauranga Boys' College, the University of Waikato and the University of York (England).

He is the Pro Vice-Chancellor of the University of Waikato at Tauranga and also Pro Vice-Chancellor (Resources) for the University of Waikato. He has been Pro Vice-Chancellor for 9 years and prior to his appointment to Tauranga was also a senior lecturer in the Economics Department and Associate Director of Executive Education at the University of Waikato.

Dean of Management

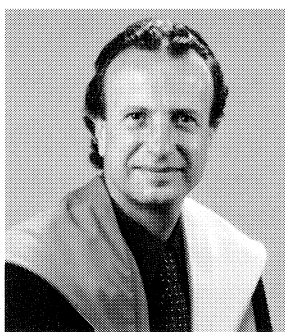
Professor Michael Pratt BA (Hons) Sheffield MCom Witwatersrand DCom South Africa ACA FCA



A specialist in the areas of performance, organisation theory and auditing Professor Pratt joined the University of Waikato in 1990 as Dean of the Waikato Management School. He was previously Professor and Head of Department of Accounting at Massey University. With extensive industry experience Professor Pratt is currently involved in researching peak performing organisations. He has published eight books and more than one hundred journal and conference papers. He advises the CEOs and top management teams of several leading global corporations in the USA and Europe on inspiration, peak performance, and value creation.

Executive Director, International Relations

Associate Professor Ed Weymes BSc(Hons) Leicester PhD Cranfield



Dr Weymes completed his doctorate at Cranfield School of Management. Upon completion of his doctorate, he conducted a number of marketing studies for the fast moving consumer goods industry in the United Kingdom before moving to Canada where he taught at Laurentian University in Sudbury, Ontario. He then joined Saskatchewan Government Insurance as Manager, Market Research and Planning before returning to the academic world at the University of Regina. At Regina University he held the position of Assistant Dean and then Associate Dean of the Faculty of Administration. During this period Dr Weymes was responsible for the development of one of the first university exchange programmes with China, together with managing the undergraduate and graduate programmes. In 1987 he was appointed Visiting Professor at Shandong University.

In 1991 Dr Weymes was appointed Director of Executive Education at the University of Waikato, Hamilton, New Zealand, responsible for the design and implementation of the MBA Programme. He is currently Executive Director of International Programmes within the Waikato Management School. This international role involves the development and management of programmes off shore. In the past four years the number of international students has increased from 250 to 1400 and represents 30% of the student body. The School is now partnered with Universities in China, India, Europe and Sri Lanka. Discussions on new ventures are taking place in Canada, the USA. The research and publishing activities of Dr Weymes are focussed on linking eastern and western management practices and he holds visiting Professorships at Shandong University in China and ESC Reims in France.

He is the co-author of *Peak Performance: Business Lessons from the World's Top Sports Organisations*, published by Harper Collins in 2000.

The University Crest



THE UNIVERSITY OF
WAIKATO
Te Whare Wānanga o Waikato

The motto, Ko Te Tangata, means 'For the People' and reflects the University's philosophy that people are central to the institution and its most valued resource. The outside red border is a stylised fern frond or pitau that symbolises new birth, growth, vitality, strength and achievement. Inside the border is the University's coat of arms. The open book surrounded by the four stars of the Southern Cross is a symbol of learning. The crest design is in the University's colours of black, red and gold.

Ceremonial Traditions

Elements of university graduation ceremonies have evolved from the 12th century when the first universities emerged in Europe. The organisation of medieval universities was modelled on the established institutions of the day – the church, the monastery, and the guild.

Latin was the language used by medieval scholars, and it is from Latin that the words 'university' and 'degree' are derived. The Latin term *universitas* means a guild or union and universities started as a scholastic guild – a self-constituted community of teachers and scholars.

The word graduate comes from the Latin word *gradus*, which means step. Admission to study a bachelors degree was the first step taken towards completing a university education. The second step was to become a 'master'. Masters were Master of Arts graduates whose degrees licensed them to teach. The Chancellor, an officer of the cathedral, originally granted teaching licences.

9

Ceremonial Robes



In the Middle Ages the corporate existence of universities was recognised and sanctioned by civil or ecclesiastical authority. The regalia worn by graduates and university staff today reflect this mix of medieval governance. Robes worn by the Chancellor resemble those worn by the Lord Chancellor of England. Graduates and academic staff wear gowns similar to the dress of medieval clergy. Hoods are also fashioned on an everyday medieval garment, although the coloured lining was a later addition to indicate the wearer's university and degree.

The academic gowns and hoods worn by graduates and University staff today are fashioned on everyday medieval garments.

University of Waikato Academic Dress

Academic regalia are as follows:

First Bachelors: Black gown; black hood with gold lining; black mortarboard.

Bachelors with Honours: Black gown; black hood with gold lining and gold border 5cm in width; black mortarboard.

Masters: Black gown; gold hood with gold lining; black mortarboard.

MPhil: Black gown; crimson hood with crimson lining; black mortarboard.

PhD: Maroon gown; crimson hood with crimson lining; black Tudor bonnet.

DLit, DSc: Crimson gown; crimson hood with crimson lining; black Tudor bonnet with gold cord and tassel.

HonD: Crimson gown; gold hood with gold lining; black Tudor bonnet with gold cord and tassel.

Chancellor and Vice-Chancellor: Black gown with lining of gold satin; gold button and cord just above the sleeves which are also lined with gold satin; a replica of the University's coat of arms just above the gold button on the shoulder; black Tudor bonnet with gold cord and tassel.

Pro Chancellor: Black gown with lining of gold satin; gold button and cord just above the sleeves which are lined with black satin; black Tudor bonnet with gold cord and tassel.

Order of Proceedings Founders Memorial Theatre

The assembly is requested to stand as the academic procession enters the theatre.

A Karanga will be performed to welcome the Official Party into the theatre.

The proceedings will commence with a mihi.

The New Zealand national anthem will be sung in English and Māori. (See page 20)

The Chancellor will open the proceedings.

The Vice-Chancellor will address the assembly.

The guest speaker, Max Parkin, Chief Operating Officer, Fonterra Co-operative Group Limited, will be introduced and will address the assembly.

The Dean will present to the Chancellor for the conferment of their qualifications, Master of Business Administration graduands from the Waikato Management School Executive Education Programme.

The first student speaker, Richard van der Jagt, will be introduced and will address the assembly.

The Dean will present to the Chancellor for the award of their qualifications, Diploma and Certificate graduands from the Waikato Management School Executive Education Programme.

The second student speaker, Susan Hutton, will be introduced and will address the assembly.

The proceeding will conclude with a poroporoāki.

The assembly will stand to sing Gaudeamus. (See page 20)

Official procession from the theatre.

Graduates procession from the theatre.

(Please remain standing until the processions have left the theatre)

Qualifications to be conferred at Founders Memorial Theatre

1st November 2005

Waikato Management School

Master of Business Administration (Executive)

Candidates awarded the degree with Distinction

Gordon Clifford Acres,
with Distinction

Ann-Maree Byrne,
with Distinction

Wu Yan Khoo,
with Distinction

Master of Business Administration (Executive)

Nigel Thomas Bartlett

Erica Maraea Johns

Anthony John Pipe

Jared Vincent Beckett

Werner Marx

Anton Brian Pires

Jonathan Paul Calder

Stanley David Murphy

Sharon Margaret Reeves

Robert James Douglas

William Tangianau Numanga

Abdullah Serhan

Mark Eric Henderson

Marlene Frances Perry

Colin Keith Windleborn

Philip Mark Hughes

Master of Business Administration (International)

Candidate awarded the degree with Distinction

Peta Ann Lean,
with Distinction

Master of Business Administration (International)

Susan Ann Bramley

Wayne Warren Louw

Richard Martin van der Jagt

Dana Allen Currie

Scott Andrew McLachlan

Robert William Walker

Jingbo Geng

Laosheng Meng

Anna Chaganwule Waugh

Novell Jagatheswaran Al Gopal

Harshada Prabhakar Patkar

Wayne Leslie Wright

Afshin Ardeshar Irani

Ling Qiu

Jeanette Fipe Taneolemasina Yiu Hing- Faerua

Alexander Martin Kuhn

Bing Shi

James Young

Bin Liu

Paul Sanders Phillip Tai

Jie Zhang

Fang Liu

Master of Technology Management

Brian Leslie McCarthy

Corinne Elizabeth Rossbotham

Postgraduate Diploma in Management Studies

Paul Christopher Arends

Steven Andrew Gunn

Malcolm Norman Mackinnon

Angela Jane Ashworth

Margaret Elizabeth Hamilton

Cain Rawiri Macpherson

Heather Marcia Beehre

Robert Cyril Hamon

Jeannie Maria Maher

Michael Robert Bell

Lane Pomeroy Hannah

Stephen Manuel

Jayne Marie Bentley

Annette Jane Harris

Pauline Francis McBride

Susan Ann Bramley

Robert Garry Hart

Roger James McCarthy

Aroha Sina Cooper-Wainohu

Susan Frances Hutton

Leon McPhillips

Scott Selwyn Copeland

Stuart John Inglis

Laosheng Meng

Dana Allen Currie

Afshin Ardeshar Irani

David Bruce Miles

Steven Patrick Emile

Peri Kauwhata

Lewis Mark Ngatuere

Jacqueline Arama Fell

Patricia Ann King

John Blair Olliver

Denise Margaret Ferguson

Peta Ann Lean

Dean Clifford Peterken

Brian Alfred Friend

Christopher Hock Beng Lim

Ling Qiu

Jingbo Geng

Bin Liu

Dayne Riddell

Novell Jagatheswaran Al Gopal

Wayne Warren Louw

Murray Stuart Rosser

Dean Paul Smith
Jacquelyn Leigh Steel
Paul Sanders Phillip Tai
Rangi Huna Tawhiao
Fonteyn Iwi Ngaro Te Kani
Tony Tou

Richard Martin van der Jagt
Ruben Petrus Maria van der Lee
Jayson Lee Vinsen
Antoinette Lea Wähl
Robert William Walker
Tumohe Sunny Wara

Anna Chaganwule Waugh
Wayne Leslie Wright
Jeanette Fipe Taneolemasina Yiu Hing- Faerua
James Young
Jie Zhang

Postgraduate Diploma in Personal Financial Planning

Neville Raymond Bannister
Tracey Marie Berry
Abbie Jane Ffrost
Michael David Craig Findlay
Jason Brett Forbes
Christopher Justin Francis
Siew Kim Verena Ke

Hui-Yin Kwok
Toni Deidre Ladd
Jessica Luck
Kathryn Heather McGregor
Robyn Joy McKinnel
Anne Margaret Peterson
Taylor Jason Pohio

Michelle Marjorie Reeves
Lynda Marie Taylor
Keren Jane Turley
Haley Natasha Wallace
Amanda Kim White
Gwyneth Adel Wills

Postgraduate Certificate in Management Studies

Kevin John Balmer
Martin John Cairncross
Quentin Gary Christie
David Malcolm Cole
Jacqueline Elizabeth Cottam
Ann Pamela Cranwell

Colleen Joan Fredericksen
Gregory Thomas Hurn
Melany Knight
Donald Bouke Arie Kranenburg
Mark Stuart MacDonald
Paul Rodney Matthews

Kevin John Moore
Craig Douglas Patton
Mehrdad Reais-Parsi
Michael Richard Seddon
Tania Jane Shackleton

Postgraduate Certificate in Management Studies (Property Finance)

Valda Joanne Adams
Marianne Noeleen-Jane Allan
Madan Jeet Singh Bange
Gavin Craig Booker
Roger John Bramley
Grant William Brodie
Janet Loh Beng Chia
Richard James Cox
John Stuart Dagg
Lyll Charles Fiskén
Suzanne Lynn Foulds
Sarah Louise Hastings

Peter Lance Herrick
Don Kai
See Nuan Koo
Grant Rex Lawson
Phillip Patrick Lee
Matthew Graeme Lelean
Margaret Patricia Millar
Stuart Wayne Neill
Rosemary Leone Newport
Emele Palamo
Susan Elizabeth Paul

Charles Craig Pettit
Vijay Prasad
Raffaele Romano
Shobha Shrivastava
Andrew Malcolm Skilton
Mark William Smith
Michael Sortain-Smith
Alison Anne Stack
Nicola Simone Sutherland
Tara Marjorie Werder
Richard John Wright

Graduands Reflections



Master of Business Administration (Executive)

Gordon Acres

Completing the MBA is an achievement long planned for. Without the daily encouragement and support from family, friends, colleagues, classmates and the excellent administrative and lecturing staff at Waikato this would not have been possible. Thank you all!

Nigel Bartlett

EMBA has grown my skills, confidence and value to both me as an individual, and to my organization. The value comes from applying the learning and network of individuals I had the pleasure to work with.

Ann-Maree Byrne

The MBA programme opens doors to opportunities and networks far beyond expectations.

Jon Calder

The completion of the MBA marks the end of an inspiring journey and the beginning of another. I have been challenged to achieve at a new level. To my classmates, thank you for sharing your journey with me. To Karina and Olivia thanks for being my inspiration and motivation to succeed.

Mark Henderson

Completion of the EMBA programme has given me the confidence to accept any challenge which confronts me in business, and I know that I have the skills, the tools and the networks to produce positive outcomes with these tools.

Willy Numanga

The MBA has been a rich learning experience for me and this has been made possible due to the value exchanges that took place with other participants and with lecturers, support from Executive Education, and most importantly, the patience and support from my family.

Marlene Perry

The MBA acknowledges that our individual skills coupled with team members efforts, to produce excellent results.

"I hear and I forget, I see and I remember, I do and I understand" Confucious (479-551BC)

Tony Pipe

Participation in the MBA learning experience continues to provide rewards that extend far beyond the lecture room. The challenge truly begins when the final assignment is completed. Thanks to all those who shared their knowledge, time and energy to support me during this exhilarating roller coaster ride of an experience.

Anton Pires

Studying for the MBA has been a very challenging, yet thoroughly rewarding experience. I feel confident with the skills I have gained to excel in business in the future. I enjoyed the programme and value the networks made possible by the MBA.

Sharon Reeves

The MBA has allowed me to carry out a goal of furthering my education. I have encountered many personal challenges along the way which hindered my learning for a time, but I was able to catch-up, recover and finally complete alongside my classmates. Many thanks to those who supported me through this time – without their help I would not have been able to make this achievement possible. Special thanks to my beautiful daughter for being so patient during the long hours of study.

Abdul Serhan

In 1990, I met a guy who had a Master of Civil Engineering from a well known university. He ended up supervising highway fencing. He quit and went to Switzerland to join an executive MBA in Lausanne. The guy had answers to most questions that I asked. I wanted to do the same. I made it after 15 years.

Master of Business Administration (International)

Susan Bramley

The year doing the IMBA has been more about the personal journey; the joy of sharing the successes; the angst of finding your intellectual limits but most of all the finding of kindred spirits in their own search of self and fulfillment. To them I owe a great deal of thanks – always.

Jingbo Geng

Completing the Postgraduate Diploma in Management Studies and the MBA really offered me a broad view of my future career. Many thanks to Waikato Management School people and many thanks to my colleagues.

Peta Lean

After 25 years working in the same profession, the IMBA was the elixir needed to refocus, refresh and return to make a positive and future oriented contribution to my organization.

Fang (Charles) Liu

The MBA programme brings the latest challenges and opportunities of the real business world to me. It provides endless opportunities to learn and to grow and to try to be better than I was before. It was an unforgettable experience. Many thanks to my wife, my parents, my brother and people who gave me support and encouragement.

Ling Qiu

Very sincere gratitude is expressed to my parents for their devotion and support.

Bing Shi

A lovely journey, thanks very much!

Paul Tai

The MBA is indeed an achievement. I have met very special and wonderful human beings as a result of the program and they will be friends for life. I have grown up so much through this challenge and I thank all of my lecturers and also the support staff for their good work. To do the MBA justice requires that one begin to practice mastery over himself or herself, and to ensure in all we do, others benefit by our actions. Being a master of anything truly begins with oneself, how we think about ourselves, others and how we construct our reality. The crown jewel of an MBA lies in what we accomplish for the good of others after graduation and as we journey through the vicissitudes of life. I highly recommend that every manager should complete an MBA as it will mature your thinking and temper you as a leader. New Zealand does not require more competent managers, our country desperately needs highly effective, humane and culturally sensitive leaders. The MBA is a good place to start the journey.

Richard van der Jagt

Completing the MBA has given me a deep sense of satisfaction and the confidence, skills and models to enable me to fully participate in the business world. Many thanks to all those people who influenced and supported me in this decision.

Jeanette Yiu Hing-Faerua

The IMBA program has been a journey of perseverance and persistence. The challenge of overcoming 81 pieces of assessments and 1 Major Research Project is after all achievable. The challenge of working with dynamic people from around the world can be overcome by learning from them and sharing experiences. The challenge of self discipline and putting one's family second to IMBA is not for the faint-hearted. As a professional woman, wife and mother, the IMBA has taught me to see things "holistically," I can only move forward from here and with more confidence in myself.

James Young

The MBA programs of Waikato University have brought me a pleasant and brand new learning experience. I have learnt a lot from our excellent lecturers and my talented colleagues. This precious learning experience will benefit my whole life.

Master of Technology Management

Corinne Rossbotham

This degree has been the most worthwhile learning experience of my whole life! I really enjoyed the action learning component - putting theory into practice and sharing challenges with fellow students and receiving feedback from tutors. The degree took me longer than I expected to complete and I was oblivious to personal changes. However, those who worked with me definitely perceived a difference in the way that I was approaching technology management. To anyone who wonders whether learning makes a difference - it definitely does! I would like to acknowledge the support of Houston Medical (who sponsored me for the majority of papers). In particular, special thanks to the Managing Director, Derek Gower (now my best friend) for his encouragement and faith in me. I would not have finished this without your support.

Postgraduate Diploma in Management Studies

Ted McCullough

Yesterday is history, today is the present, tomorrow is the future. What we do today defines what happens tomorrow. By completing the Postgraduate Diploma in Management Studies today allows me to define a lot more about what is happening tomorrow, and every other tomorrow after that.

Rangi Tawhiao

Having completed the Postgraduate Diploma in Management Studies at the end of 2004 has increased my competence, ability and skilfulness. This program lifted my self-confidence so much that I made a dream come true by running as General Candidate for Whangarei in the 2005 elections. I actively participate in public forums with much self assurance and my life has grown from boring to outrageously fantastic. I would not have any hesitation in recommending this course to any Māori person who is able to read and write and not afraid to work hard. Kia kaha! Kia maia! Kia manawanui!

Postgraduate Diploma in Personal Financial Planning

Anne Petersen

Completing the Diploma in Personal Financial Planning has been my first venture into University level education. Without the encouragement from my family, work colleagues and fellow students the challenge for me could not have been met.

Keren Turley

I left school planning not to attend University. Now look at me – my graduation. My studies were challenging and also gratifying. Through the duration of my studies I have developed and grown mentally, professionally and personally. What a great reward.

Postgraduate Certificate in Management Studies (Property Finance)

Madan Bange

Studying for the Postgraduate Certificate in Property Finance has been a challenge for me. It was a unique experience with challenge and submitting assignments on line and also taking tests on line. The IT experts who designed all should be congratulated and also the academic staff who constructed these courses. I would also like to thank the management of Westpac who gave me this opportunity.

Don Kai

Successfully completing the fourth paper of the Postgraduate Certificate in Management Studies (PropFin) was a huge burden off my shoulders. The support from my family, work colleagues and fellow students has helped me get through the last 18 months. The noose is now off my neck – what a relief to resume a normal life!

Margaret Millar

It was a challenge returning back to study, juggling work and family commitments. The achievement of completing and passing the paper far surpasses all the late nights and declined social functions.

Emele Palamo

Completing the Property Finance programme has been a challenge. My first venture into University level education. Special thanks to my husband and son for great support. It's been a great opportunity to get to know other colleagues from work.

Postgraduate Certificate in Business Research

Andrew (Karl) Wright

All my thanks to my family who made this possible – you are truly awesome.

God Defend New Zealand

God of Nations at Thy feet
In the bonds of love we meet
Hear our voices we entreat
God defend our free land

Guard Pacific's triple star
From the shafts of strife and war
Make her praises heard afar
God defend New Zealand

E Ihowa, Atua
O nga Iwi o te Ao
Ata whakarongona
Me aroha noa

Kia hua ko te pai
Kia tau to atawhai
Manaakitia mai
Aotearoa

Gaudeamus

Gaudeamus igitur
Juvenes dum sumus
Gaudeamus igitur
Juvenes dum sumus
Post jocundam juventutem
Post molestam senectutem
Nos habebit humus
Nos habebit humus

Vivat Academia!
Vivant professores!
Vivat Academia!
Vivant professores!
Vivat membrum quodlibet
Vivant membra quaelibet
Semper sint in flore
Semper sint in flore

Alma Mater floreat
Quae nos educavit
Alma Mater floreat
Quae nos educavit
Caros et commilitones
Dissitas in regions
Sparsos, congregavit

Translation

Let us then be joyful
while we are young
Let us then be joyful
while we are young
After the pleasure of youth
After the burden of old age
The earth will have us
The earth will have us

Long live the University
Long live the professors
Long live the University
Long live the professors
Long live every member
Long live all the members
May they ever flourish
May they ever flourish

May our Alma Mater thrive
A font of education
May our Alma Mater thrive
A font of education
Friends and colleagues, where'er they are
her near or from afar
Heed her invitationourish



THE UNIVERSITY OF
WAIKATO
Te Whare Wānanga o Waikato

Private Bag 3105, Hamilton, New Zealand
Telephone +64 856 2889 Facsimile +64 838 4539