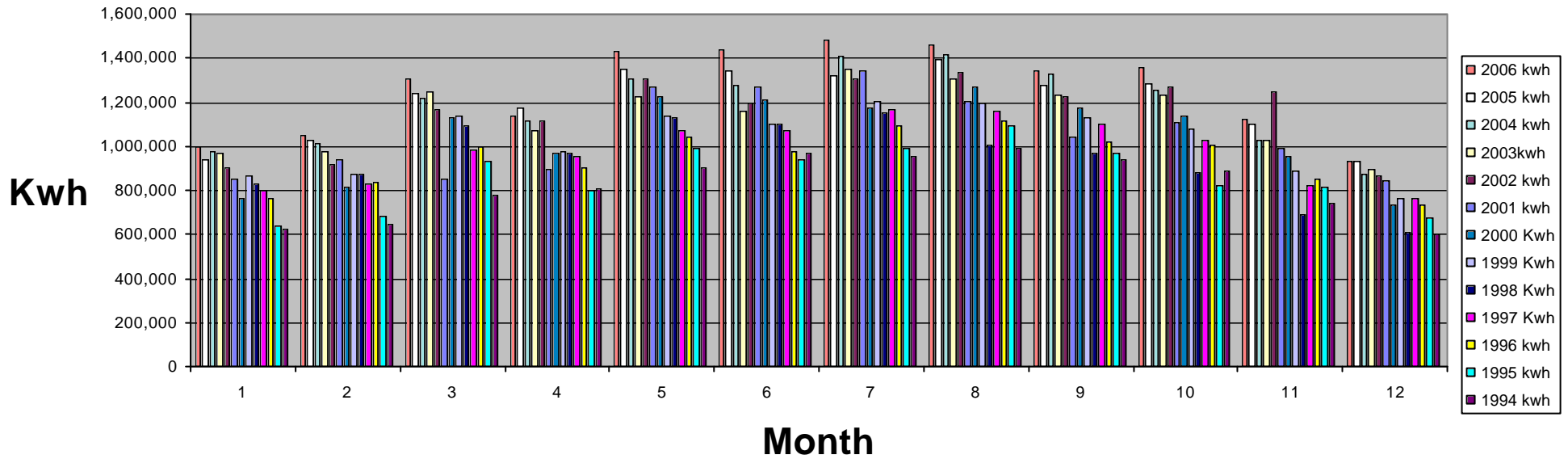


### Electricity Consumption Kwh 1994 - 2006



### Electricity Consumption

Month	2006 kwh	2005 kwh	2004 kwh	2003kwh	2002 kwh	2001 kwh	2000 Kwh	1999 Kwh	1998 Kwh	1997 Kwh	1996 kwh	1995 kwh	1994 kwh	Average
January	996,558	936,251	973,761	972,403	906,040	850,347	760,197	864,514	828,204	800,766	761,310	642,000	622,000	762,907
February	1,048,584	1,024,457	1,011,726	974,093	918,287	940,113	813,234	871,377	871,029	830,100	833,484	681,000	645,000	801,069
March	1,306,054	1,241,593	1,215,278	1,249,010	1,167,132	852,372	1,129,950	1,134,636	1,094,832	985,440	998,211	930,000	777,000	982,727
April	1,134,992	1,174,415	1,112,025	1,068,358	1,117,519	892,509	965,571	974,400	971,403	953,391	899,859	801,000	810,000	903,112
May	1,433,967	1,347,467	1,303,306	1,222,842	1,303,010	1,271,841	1,225,992	1,134,687	1,131,051	1,073,400	1,041,795	993,000	900,000	1,072,953
June	1,440,007	1,340,497	1,280,535	1,159,541	1,198,883	1,270,937	1,208,670	1,104,000	1,097,445	1,072,605	973,416	936,000	972,000	1,047,271
July	1,480,248	1,320,159	1,406,149	1,353,637	1,305,846	1,340,838	1,176,597	1,203,333	1,150,842	1,163,436	1,091,433	993,963	957,000	1,112,556
August	1,460,408	1,393,690	1,415,233	1,304,490	1,338,461	1,201,708	1,269,327	1,194,840	1,003,039	1,156,719	1,115,574	1,097,106	993,000	1,114,091
September	1,341,865	1,273,710	1,330,308	1,231,954	1,226,414	1,039,807	1,174,101	1,128,483	967,434	1,102,530	1,022,775	969,114	936,000	1,030,972
October	1,354,559	1,283,731	1,258,619	1,235,625	1,266,986	1,111,381	1,134,261	1,076,040	879,652	1,029,852	1,008,087	818,705	885,000	999,072
November	1,123,754	1,102,283	1,029,802	1,026,561	1,247,564	991,259	950,940	890,817	689,556	823,149	853,518	817,950	738,000	858,569
December	935,354	928,793	875,422	893,810	862,935	845,381	731,934	760,197	610,710	762,738	734,547	674,001	603,000	714,113
<b>Total Kw</b>	<b>15,056,350</b>	<b>14,367,046</b>	<b>14,212,163</b>	<b>13,692,324</b>	<b>13,859,077</b>	<b>12,608,493</b>	<b>12,540,774</b>	<b>12,337,324</b>	<b>11,295,197</b>	<b>11,754,126</b>	<b>11,334,009</b>	<b>10,353,839</b>	<b>9,838,000</b>	<b>11,399,413</b>
<b>Total Gj</b>	<b>54,203</b>	<b>51,721</b>	<b>51,164</b>	<b>49,292</b>	<b>49,893</b>	<b>45,391</b>	<b>45,147</b>	<b>44,414</b>	<b>40,663</b>	<b>42,315</b>	<b>40,802</b>	<b>37,274</b>	<b>35,417</b>	<b>41,038</b>