



THE UNIVERSITY OF  
**WAIKATO**  
*Te Whare Wānanga o Waikato*

**Behaviour Analysis  
Handbook 2022**



# CONTENTS

Behaviour Analysis	1
Behaviour Analysis at the University of Waikato	3
Undergraduate Courses in Behaviour Analysis	6
Postgraduate Qualifications that can include Behaviour Analysis	8
Master of Applied Psychology in Behaviour Analysis – MAppPsy(BA)	11
Post-Masters PGDip(Psych) Specialising in Behaviour Analysis	18
Applying for MAppPsy(BA) and PGDip(Psych)	19
Postgraduate Diploma in the Practice of Psychology - PGDipPracPsych (ABA)	20
Entry Requirements for PGDipPracPsych(ABA)	23
Applying for PGDipPracPsych(ABA)	24
Certification under the Behavior Analyst Certification Board®	25
BACB® Practicum	30
Eligibility to sit the BACB® Certification Examination	31
Doctorate in Philosophy Programme (PhD) in Behaviour Analysis	32

## Behaviour Analysis

*Behaviour Analysis* is a scientific approach to understanding why people and animals do what they do. Studying behaviour analysis will teach you how both animal and human behaviour is affected by events in the social and physical environment and what you can do to produce behaviour change to help improve lives. Knowledge of this science of behaviour and its behaviour-change technology will assist you in a variety of careers.

As a field, behaviour analysis consists of concepts, principles and techniques. As a student of Behaviour Analysis, you will learn how behaviour can be understood and changed. This includes an introduction to behaviourism, which is the philosophical underpinning of the science of behaviour and the experimental analysis of behaviour (EAB), which is the domain of basic research. Applied Behaviour Analysis (ABA) is concerned with the application of these foundations, in the development of a technology to improve socially important behaviours. You will learn many skills, including how to define and measure behaviour, create behaviour change programmes and evaluate their effectiveness in courses that combine theoretical and practical learning to produce marketable skills.

## Applications of Behaviour Analysis

*Applied Behaviour Analysis* (ABA) is the application of behaviour-analytic principles to improve socially important behaviours. ABA is used in many settings and with a wide range of problems. Many effective and evidence-based procedures and interventions to addressing problem behaviour, and treatments for individuals with developmental disabilities, including Autism Spectrum Disorder (ASD) are based on ABA.



ABA can be used to help people gain new skills, reduce unwanted behaviours, or prevent problem behaviour starting in the first place. ABA is useful in many domains including for example Organisational Behaviour Management (OBM), and ecological interventions (e.g. reducing littering, increasing recycling behaviour, addressing climate change).

*Clinical Behaviour Analysis* (CBA) involves the application of behaviour-analytic principles through verbal strategies to help people with their problems. These therapies, termed third generation behaviour therapies, include *Dialectical Behaviour Therapy*

(DBT), *Acceptance and Commitment Therapy* (ACT), *Behavioural Activation* (BA), and *Functional Analytic Psychotherapy* (FAP).

## Careers in Behaviour Analysis

Some students study Behaviour Analysis in order to apply their knowledge and skills to human problems, and to do work based on behavioural principles in an applied setting or to undertake research in these areas. Others study it to work with animal behaviour; they may be interested in research or in animal problem behaviours or animal training. Some combine both research and practice and/or the study of animal and human behaviour.

For whatever reason you are considering taking courses in this area, the behavioural courses and programmes will provide you with knowledge which you can use to understand, study and work practically with behaviour. An understanding of how and why behaviour occurs and how it can be changed for the better is of fundamental value to almost all professions.

Depending on your specialty, you may work in a range of settings (including research institutions, private practice, schools, special education settings, universities, health services, business and industry, and governmental agencies), and with a range of populations (including families, people with psychological problems, children with challenging behaviours, individuals with special needs, teachers, people and their pets, and others seeking positive behaviour change).

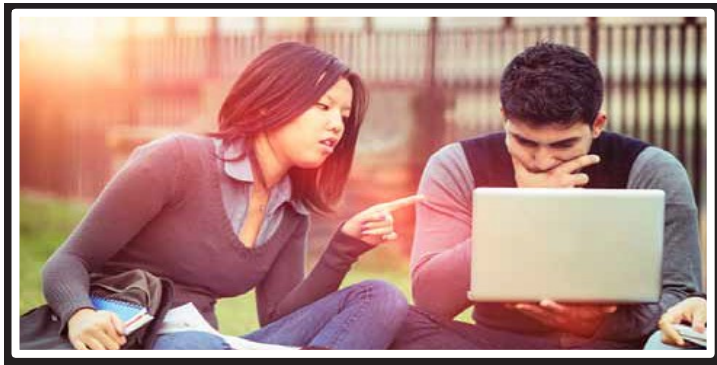
Students who have specialised in the application of Behaviour Analysis to human issues and clinical problems are working in the community, in health, in mental health, and in early intervention or in educational settings with individuals with a wide range of problems and disabilities, including Autism Spectrum Disorder, Conduct Disorder, and Attention Deficit Hyperactivity Disorder.

However, it doesn't matter what type of psychology you choose to practice, or whether you end up in a field orientated to people or animals. What is important is that you gain an understanding of how and why organisms behave (i.e., what maintains and/or influences behaviour).

## Practical Experience in ABA

Many students pursuing careers involving application of behaviour analysis gain practical experience alongside their undergraduate and graduate studies. This can be voluntary or paid, such as support work. In addition, experience can sometimes be gained working for parents or trusts who employ students specialising in ABA to work with their children, helping to implement programmes for them.

The graduate programme includes training in the skills required to work practically, applying behaviour analytic principles to behaviour change with humans. The postgraduate programme provides supervision and training for students who are completing internships to become Registered Psychologists in NZ. It also delivers the curriculum required for the professional credential of Board Certified Behaviour Analyst (BCBA)<sup>®</sup>.



## Behaviour Analysis at the University of Waikato

The undergraduate, graduate, and postgraduate courses in Behaviour Analysis provide training in the Experimental Analysis of Behaviour, Applied Behaviour Analysis and Clinical Behaviour Analysis. The graduate and postgraduate courses in Behaviour Analysis provide course work sequences 'verified' by the Association for Behaviour Analysis International (ABAI). The completion of such a course sequence meets one of the requirements of the Behaviour Analysis Certification Board, Inc. (BACB)<sup>®</sup> for eligibility to sit their exam, leading to the professional credential of Board Certified Behaviour Analyst (BCBA)<sup>®</sup>.

The courses can be taken on campus in Hamilton or on-line and as part of a **Postgraduate Diploma in Psychology** or the **Masters in Applied Psychology in Behaviour Analysis**.

**The Postgraduate Diploma in the Practice of Psychology** in Applied Behaviour Analysis is a post-masters or post-doctorate qualification that is designed to provide the requirements for registration as a Psychologist in New Zealand, specializing in the application of Behaviour Analysis. It provides the supervised practical experience required for registration as a Psychologist in NZ.

## Research in Behaviour Analysis at the University of Waikato

The University of Waikato is involved with both experimental and applied research in Behaviour Analysis.

The research is aimed at advancing the understanding of behaviour. It includes application of psychological principles to behaviour problems. Many of the advances in behavioural therapies have their basis in laboratory research. Some of the research has a direct crossover between the experimental analysis of behaviour and the applied analysis of behaviour, such as in the areas of reinforcement procedures, reinforcer preference, extinction, self-control, and stimulus generalisation.

Research in Behaviour Analysis includes the study of learning and of the application of behaviour principles to understanding and changing human and animal problem behaviour, health-related behaviour, developing communication skills, providing behaviour support for people with disabilities, improving educational practices, and animal training. There are presently basic and applied research projects examining scent detection with dogs, and basic research on complex human behaviour, including perspective taking and problem solving. There are also ongoing projects examining the application of behavioural interventions to improve educational and developmental outcomes.

Theses have included topics related to dealing with challenging behaviour, teaching adaptive and functional communication skills to vulnerable populations, and exploring the use of technology to facilitate behaviour change and increase independence in learners.

**Electronic versions of theses completed since 2006 can be found here:**

[www.researchcommons.waikato.ac.nz/handle/10289/2222](http://www.researchcommons.waikato.ac.nz/handle/10289/2222)



## Undergraduate Courses in Behaviour Analysis

Students who wish to study Behaviour Analysis at The University of Waikato at undergraduate level should complete a BA, BSc or BSocSc with a major in Psychology and should include:

PSYCH100	Brain, Behaviour and Cognition
PSYCH204	Behavioural Psychology and Perception
PSYCH211	Understanding Psychological Research
PSYCH307	Psychological Research Methods
PSYCH314	Behaviour Analysis

Depending on the area of their interests, students should consider including:

PSYCH319	Infant and Child Development
PSYCH337	Individual Differences and Measurement
PSYCH338	Mental Health and Wellbeing

If interested in working in educational settings, then they should consider including courses related to education in their degree. A double major in Psychology and Education could be considered by students wishing to work in special education or in other educational settings.



If interested in animal behaviour they should consider relevant papers in biological sciences in their degree. A double major in Psychology and Biological Sciences could be considered by students wishing to work in animal behaviour.

## Qualifications including undergraduate courses in Behaviour Analysis for Graduates in subjects other than Psychology

Students who already hold a bachelor's degree in a subject other than psychology may include the Behaviour Analysis undergraduate course and the suggested



courses (outlined above) as part of a:

Diploma in Social Sciences - Dip(SocSc) in Psychology

<https://www.waikato.ac.nz/study/qualifications/diploma>

or a Graduate Diploma in Psychology - GradDip(Psych)

<https://www.waikato.ac.nz/study/qualifications/graduate-diploma>, to gain entry into the postgraduate qualifications.

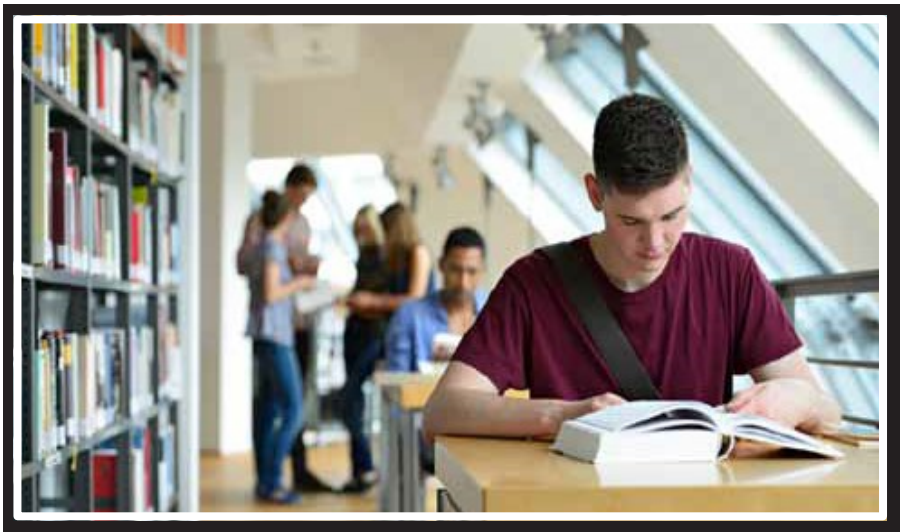
## Postgraduate Qualifications that can include Behaviour Analysis

Graduate and postgraduate courses in Behaviour Analysis can be taken separately or as part of a specialist qualification. Students wishing to include some Behaviour Analysis courses in their postgraduate qualification may take them as part of one of the one year postgraduate programmes:

- [Postgraduate Certificate in Psychology - PGCert\(Psych\)](#)
- [Postgraduate Diploma in Psychology - PGDip\(Psych\)](#)
- [Bachelor of Social Sciences with Honours - BSocSc\(Hons\)](#)
- [Master in Social Sciences - MSocSc](#)
- [Master of Science - MSc](#)

Or as part of the two-year programme:

- [Master of Applied Psychology in Behaviour Analysis – MAppPsy\(BA\)](#)



## Postgraduate Qualifications Specialising in Behaviour Analysis

The specialist programmes in Behaviour Analysis are:

### **Masters of Applied Psychology in Behaviour Analysis - MAppPsy(BA)**

This can be taken as a two-year post-bachelors or as a one-year post-honours or post-PGDip qualification, depending on the student's background.

<https://calendar.waikato.ac.nz/regulations/masters/mapppsy.html>

### **Postgraduate Diploma in the Practise of Psychology in Applied Behaviour Analysis - PGDipPracPsych(ABA)**

This is a one-year post-masters qualification

<https://calendar.waikato.ac.nz/regulations/diplomas/pgdippracpsych.html>

Students who already have a master's degree in Psychology and who wish to study Behaviour Analysis further may, with permission, take the complete University of Waikato BACB® approved Behaviour Analysis coursework sequence required to become a BCBA® as the first year of an MAppPsy(BA) or as a PGDip(Psych) (for details, see later in this booklet).

**Applications for the above programmes are to be submitted via MyWaikato.**

## Doctoral Programme in Behaviour Analysis

The University of Waikato offers a **research-only** doctoral programme leading to a Doctorate in Philosophy (PhD) degree. Students with the appropriate level of honours in their master's degree may enrol in a PhD and undertake a research topic in Behaviour Analysis

<https://calendar.waikato.ac.nz/regulations/higher/phd.html>

There is no coursework in a research-only PhD. Students develop a research programme which they then conduct over two to three years under supervision. This research programme and its results are then written up as a thesis that is submitted for

examination. It is possible to write up and submit components of the research to relevant journals for consideration for publication as they are completed.

### **Further Information**

For further information on any of these options e-mail

[behavioural.psychology@waikato.ac.nz](mailto:behavioural.psychology@waikato.ac.nz)

More information is also available through the University of Waikato website:

[www.waikato.ac.nz](http://www.waikato.ac.nz)

[www.waikato.ac.nz/fass/about/psychology/research/behaviour-analysis](http://www.waikato.ac.nz/fass/about/psychology/research/behaviour-analysis)

## **Master of Applied Psychology in Behaviour Analysis - MAppPsy(BA)**

The **Master of Applied Psychology in Behaviour Analysis** at The University of Waikato provides students with:

- a sound understanding of the underlying concepts and principles associated with Behaviour Analysis, and of the applications of these concepts and principles;
- knowledge of the research skills required for behaviour analysis, including the ability to read, interpret and appraise published behavioural research critically, and the ability to conduct fundamental and applied research in behaviour analysis;
- an understanding of functional analyses of problem behaviour and of how to develop an appropriate programme for behaviour change in their area of specialty;
- analytic and library research skills, and skills in presenting proposals and reports in both written and oral format.

The Behaviour Analysis courses available for this degree are verified by the Association for Behaviour Analysis International (ABAI) as providing some of the course work hours required before candidates can apply to the BACB sit the BCBA® certification examination. The courses are based around the BACB Fifth Edition Task List.

### **MAppPsy(BA) Degree Requirements**

When this degree is the student's first postgraduate qualification in Psychology it normally takes two years (full time) to complete. The programme requires 240 points, 120 of the required points are taken in the first year. These points normally come from five courses in Behaviour Analysis and three elective courses, as outlined below. Elective courses are selected in consultation with the Behaviour Analysis programme staff. The second year typically involves a 120 point thesis. However, if the student requires further academic background, they may be required to complete a 90-point thesis or a 60-point dissertation and gain the remaining 30 or 60 points from the Year 1 courses.

### **Year 1 MAppPsy(BA) – Course Work**

Year 1 of the MAppPsy(BA) normally comprises 120 points of courses. The four core behavioural courses (15 points each) must be included, and candidates intending to go on to professional practice with humans should also include:

PSYCH587 Behaviour Analysis Practicum (15pts)

Under some circumstances PSYCH588 or PSYCH589 Directed Study (15pts) or PSYCH590 Directed Study (30pts) in a relevant area may be included as well as or instead of this.

The remaining 45pts come from other graduate courses, selected in discussion with the programme staff. The Behaviour Analysis courses are offered either on campus (HAM) or online (NET).

## **Core Courses**

### **PSYCH538B HAM or NET (15pts)**

#### **Applications of Behaviour Analysis**

This paper focuses on the implementation of Applied Behaviour Analysis (ABA) in practice. Behavioural interventions and programmes, including common manualized interventions, will be reviewed. The objective is to identify critical components and essential practical skills, and to provide opportunity to practice these skills. Implementation barriers, ethical considerations, and the importance of evidence-based practice will also be discussed

### **PSYCH560B HAM or NET (15pts)**

#### **Applied Behaviour Analysis: Theory and Issues**

This paper closely examines the conceptual and philosophical foundations of behaviour analysis: Commonly accepted behavioural concepts and principles are re-examined. The paper aims to help students understand current thinking in behavioural psychology, and how this intersects with other sub fields of psychology. It has a strong focus on Verbal Behaviour, and theories and conceptualisations of 'learning'. The implications of this for practice as a behaviour analyst and a psychologist are discussed.

### **PSYCH561A HAM or NET (15pts)**

#### **Behaviour Analysis: Concepts and Principles**

This course provides an in-depth introduction to the conceptual foundations and core principles of behaviour analysis, including research and theory related to the concepts of reinforcement, extinction, stimulus control, derived stimulus relations, and motivating operations.

### **PSYCH577A HAM or NET (15pts)**

#### **Research Methods in Behaviour Analysis**

This course covers research methodologies used in the field of behaviour analysis, including collection of data, experimental design, data presentation and analysis, and

interpretation and reporting of research findings.

### PSYCH587D HAM or NET (15pts)

#### Behaviour Analysis Practicum

This course aims to introduce students to the processes involved in applying behavioural principles to help change human behaviour. It gives students the experience of using some of the professional skills required to be able to do this work. To allow time for the practical component of the course it starts at the beginning of the A Semester and continues until completed (normally it will continue into the B Semester). There is regular class contact in this course.

The course can be taken as a NET course with permission of the course coordinator and provided the student has access to an appropriate setting in which the practical component of the work can be completed.

#### On-line (NET) Courses

The courses are available online when they have a NET extension or on campus (with a HAM extension). Where both are available, the two versions are taught synchronously. Students wishing to work online enrol in the NET version of each course. Each course involves a two-hour class and one hour of tutorial work per week. Online (NET) students may attend classes in real time through videoconferencing. All classes are recorded and made available online. Both NET and on-campus students complete the tutorials for these courses online at times that suit them. NET students also complete the practical work for PSYCH538 online in their own time. On-campus students may do this practical work online or on campus.

#### Elective Courses

PSYCH581A (15pts) HAM	Psychological Assessment
PSYCH564B (15pts) HAM	Developmental Psychopathology
PSYCH575A (15pts) HAM	Indigenous Psychologies
PSYCH588A or PSYCH588B (15pts) or	
PSYCH589A or PSYCH589B (15pts) or	
PSYCH590 (30pts) Directed Study (HAM or NET)	

Other psychology courses relevant to the student's specialty (such as PSYCH556A - Advanced Topics in Abnormal Adult Psychology, Organisational Psychology or Crime Science) may be included with approval from the programme staff.

Students with biology in their undergraduate degree, in addition to their psychology major, and with an interest in applications of Behaviour Analysis to animal behaviour may consider taking relevant 500-level psychology courses in animal behaviour or courses in



biological sciences. Students with education in their undergraduate degree, in addition to their psychology major, may include an appropriate education 500-level course.

### **Elective Courses for Online Students**

Students who wish to take the full MAppPsy(BA) on-line should discuss their elective options with the staff in the programme.

### **Year 2 MAppPsy(BA) - Thesis (or Dissertation)**

Year 2 of the MAppPsy(BA) programme normally comprises a 120 point research thesis on a behavioural topic.

### **PSYCH594X Thesis (120 pt)**

If the student requires further academic background then they may need to take some courses in Year 2.

In this case they may enrol in a dissertation or smaller research thesis:

### **PSYCH593X Thesis (90 pt)**

With this they would include 30 points (2x15 point courses) from the Year 1 courses, or:

### **PSYCH592X Dissertation (60 pt)**

With this they would include 60 points (4x15 point courses) from the Year 1 courses.

### **Thesis and Dissertation Time Frame:**

Enrolment in a thesis or dissertation is normally 12 months fulltime (or 24 months for a part-time enrolment). The 12 (or 24) month period typically starts at the beginning of the academic year.

The research write-up of the thesis or dissertation is due in 12 (or 24) months from that date. If the 12 (or 24) months terminates on a weekend day or a New Zealand public holiday the due date is brought forward to the work day prior to the weekend or holiday. A 21-day extension to this period can be applied for through the student's supervisor prior to the end of the 12 (or 24) months.

If the research is not completed at the end of the 12 (or 24) months the student may enrol in the research course for an additional period at that time.

## Summary of MAppPsy(BA) Degree Structure

### Year 1

Core Courses (75pts)					Elective Courses
PSYCH538 (15pts)	PSYCH560 (15pts)	PSYCH561 (15pts)	PSYCH577 (15pts)	PSYCH587 (15pts)	(45pts)

### Year 2

Thesis (120pts) on a behavioural topic
--

or...

Thesis (90pts) on a behavioural topic	Elective or Core Courses (30pts)
---------------------------------------	-------------------------------------

or...

Dissertation (60pts) on a behavioural topic	Elective or Core Courses (60pts)
---	-------------------------------------

## **MAppPsy(BA) Entry Requirements**

MAppPsy(BA) programme for the two-year degree requires:

- a Bachelor's Degree with a major in Psychology,
- at least a B + average in Psychology undergraduate courses,
- a pass in PSYCH307 *Research Methods* or an equivalent, and
- a pass in PSYCH314 *Behaviour Analysis* or equivalent.

### **Entry into Year 2 of the programme is contingent on adequate grades in Year 1**

Some of the possible elective courses for the MAppPsy(BA) may have pre-requisite requirements over and above those required for the Behaviour Analysis courses and for entry into the programme. When possible, students should check these when selecting their third year undergraduate papers. Which undergraduate courses are best for that student will depend on the area the student wishes to specialise in. It is possible to complete some of the prerequisite papers concurrently with MAppPsy(BA) programme if they were not taken previously.

### **Entry into Year 2 of a MAppPsy(BA) programme for the one-year degree requires:**

- a completed PGDip(Psych) or a Bachelor's with Honours degree in Psychology including some or all of the core 500-level courses for the programme,
- an average grade of at least a B+ averaged over their Psychology graduate courses.

Students accepted into the programme at Year 2 may be required to take specific courses alongside their thesis or dissertation depending on the content of their PGDip(Psych) or Honours degree courses.

### **Using a PGDip(Psych) or a BSocSc(Hons) (with appropriate courses) as a substituted for Year 1 of the MAppPsy(BA)**

Candidates from the University of Waikato whose grades do not meet the grade requirement or those who have a high enough grade average but who would prefer to do a BSocSc(Hons) degree, may take the MAppPsy(BA) Behaviour Analysis courses

as part of a PGDip(Psych) or a BSocSc(Hons).

These candidates can then apply for entry to the MAppPsy(BA) at Year 2 and can take the MAppPsy(BA) as a one-year degree once their PGDip(Psych) or BSocSc(Hons) is complete.

If they have some but not all of the Year 1 content then they may be required to take additional courses as part of Year 2.



Candidates from outside of the University of Waikato who have completed a PGDip or an Honours degree in Psychology may apply to take a one-year MAppPsy(BA) provided they have content equivalent to that in Year 1 of the MAppPsy(BA) courses in that qualification.

If they have some but not all of the content then they may be required to take additional courses as part of Year 2.

## Post-Masters PGDip(Psych) Specialising in Behaviour Analysis

Candidates who have already completed a Master's degree in Psychology and who wish to complete a postgraduate qualification in Behaviour Analysis that covers **all** the course work required for the professional credential of Board Certified Behaviour Analyst by the BACB (see later in this document), may complete the post-masters courses, PSYCH551 and PSYCH552, alongside four of the graduate courses in Behaviour Analysis. These can be taken as Individual Paper Credits (IPCs) or as a PGDip(Psych).

All six courses can be completed on campus or online.

The courses for a PGDip(Psych) specialising in Behaviour Analysis are:

PSYCH538B HAM or NET (15 pts) Applications of Behaviour Analysis  
PSYCH560B HAM or NET (15 pts) Applied Behaviour Analysis: Theory and issues  
PSYCH561A HAM or NET (15 pts) Behaviour Analysis: Concepts and Principles  
PSYCH577A HAM or NET (15 pts) Research Methods in Behaviour Analysis

Classes for these may be attended in real-time on-campus or by video conference and are also recorded for later viewing. Tutorials are on-line and are completed on-line in the student's own time.

The post-masters courses for this are:

PSYCH551D HAM or NET (15 pts) Professional Issues in Psychology (ABA)  
PSYCH552D HAM or NET (45 pts) Case Study Analysis in Applied Psychology (ABA)

These last two courses together take 2 trimesters to complete with one class and one tutorial per week every week. One third of the classes and tutorials are for PSYCH551 and two thirds are for PSYCH552.

Net students attend the classes for these in real time by video conference. Tutorials are online and are completed at any time.

The courses PSYCH538, PSYCH560, PSYCH561, and PSYCH577 would normally be taken prior to PSYCH551 and PSYCH552.

## Applying for Entry to the MAppPsy(BA)

Potential applicants should approach the School of Psychology for help in planning the most appropriate course of study for their needs and background:

[behavioural.psychology@waikato.ac.nz](mailto:behavioural.psychology@waikato.ac.nz)

Students who are not graduates of Waikato should also include their academic record. Details of the each student's course of study must be approved by the programme staff prior to the student being accepted into the programme.

## Apply via MyWaikato for the PGDip(Psych)

More information is available through the University of Waikato website

[www.waikato.ac.nz](http://www.waikato.ac.nz)

[www.waikato.ac.nz/fass/about/psychology/research/behaviour-analysis](http://www.waikato.ac.nz/fass/about/psychology/research/behaviour-analysis)



## Postgraduate Diploma in the Practice of Psychology (Applied Behaviour Analysis)

### PGDipPracPsych(ABA)

The **PGDipPracPsych(ABA)** provides those with Masters or Doctorate degrees containing a substantial component of Behaviour Analysis with:

1. a quality learning experience for making the transition from academic knowledge to professional practice;
2. a means of achieving a postgraduate qualification recognized in both New Zealand and Australia; and
3. a pathway for registration as a psychologist in NZ under the Health Practitioners Competency Assurance Act.

Graduates of the PGDipPracPsych(ABA) will have developed practical skills in applying behavioural principles to a range of behaviour problems in their area of specialty, including experience with functional analyses of problem behaviour, with developing and applying appropriate programmes for behaviour change, with the design of techniques for assessment and data collection, with implementing behaviour change programmes and adjusting them in the light of any problems that arise, and of addressing ethical issues while abiding by the guidelines for responsible conduct of Behaviour Analysts. They will have developed skills and knowledge in positive behavioural approaches to dealing with challenging behaviour and in clinical applications of Behaviour Analysis.

Candidates for this qualification must enrol and follow an approved programme of study in the Division of Arts, Law, Psychology and Social Sciences for at least one year of full-time study, or not more than three years of part-time study.

### PGDipPracPsych(ABA) Structure

The PGDipPracPsych(ABA) is a one-year full-time or two-year part-time postgraduate diploma worth 120 points. The programme includes three courses that are normally taken simultaneously to complete the diploma.

Two courses, **PSYCH551 Case Study Analysis in Applied Psychology** and **PSYCH552 Professional Issues in Psychology**, provide course work that is covered during regular meetings and tutorials. These courses require regular submission of assignments. Both courses are offered on campus or online.

The course **PSYCH553 The Practice of Psychology** provides supervision for the internship. Undertaking PSYCH553 requires regular attendance at supervision meetings and regular maintenance of a professional practice log. PSYCH553 requires the student completes 1500 hours of supervised professional practice over a year if taken full-time (part-time enrolment is also possible). Students practising outside of Hamilton can attend university-based group and individual supervision through videoconference.



All three courses are run for the full 12 months of the year (except for the end of December and the start of January). PSYCH551 and PSYCH552 classes may be attended in person or by video conference and take place every Monday afternoon (except NZ public holidays – in which case there will be an on-line class to be completed in the students' own time). Some Monday classes are for PSYCH551 and some for PSYCH552.

The programme starts at the beginning of the academic year.

## **PGDipPracPsych(ABA) Courses**

### **PSYCH551D Case Study Analysis in Applied Psychology (ABA) (45pts)**

HAM or NET - The primary objective of this course is for students to extend their psychological and behavioural knowledge and to address issues related to practice, i.e., recognising how behavioural theory and research can be applied to particular needs faced in practice, developing evidence-based interventions, and evaluating the effectiveness of psychological interventions. It is part of the University of Waikato Verified Course Sequence (VCS).

### **PSYCH552D Professional Issues in Psychology (ABA) (15pts)**

HAM or NET - This course develops knowledge and skills in the professional practice of behavioural psychology and in understanding what constitutes professional conduct. The course helps develop an in-depth understanding of ethical principles and other professional issues in the practice of behavioural psychology, especially issues relating to the student's field of specialisation. Codes of Ethics, the BACB Disciplinary Standards and their Guidelines to Responsible Conduct will be covered in depth. It is part of the University of Waikato Verified Course Sequence (VCS).

### **PSYCH553X The Practice of Psychology (ABA) (60pts)**

The course develops students' skills in the application of behaviour analysis through supervision of their day-to-day practice throughout the period of enrolment. The course will help develop skills in applying psychological knowledge to practical concerns in the field of behaviour analysis and help the development of a scientist-practitioner approach to solving applied problems. Students in this course must be in appropriate paid or voluntary work in NZ and must register as intern psychologists with the NZ Psychologists Board before starting this course.

## PGDipPracPsych(ABA) for Registration as a Psychologist in NZ

The programme is accredited by the **NZ Psychologists Board** as providing the training required for and supervision of 1500 hours of professional experience required for students in NZ wishing to register as Psychologists in NZ under the NZ Health Practitioners Competence Assurance Act ([www.moh.govt.nz/hpca](http://www.moh.govt.nz/hpca)) in NZ.

Students must have appropriate internship employment and have their field supervisor arranged to enter the programme (see entry requirements). Once accepted into the programme students must apply to the NZ Psychologists Board to register as intern psychologists **prior to starting PSYCH553**. For the application form and fees for this see: <http://www.psychologistsboard.org.nz/>

The University of Waikato offers PSYCH553 only to interns in practice in NZ.

## PGDipPracPsych(ABA) for BACB Certification

The complete University of Waikato ABAI verified course sequence includes PSYCH538, PSYCH560, PSYCH561, PSYCH577, and PSYCH587 (see information earlier in the booklet). PSYCH551 and PSYCH552 from the PGDipPracPsych(ABA), provide the remaining coursework hours for this verified course sequence (see the later section on BCBA<sup>®</sup> certification).

Students who also wish to work towards the BCBA<sup>®</sup> credential can use their internship towards the supervised practice requirements of the BACB, but they will need to arrange their own supervision for this. For further details of the BACB requirements refer to the BACB web-site, as these requirements change from time to time: <https://www.bacb.com/bcba/#2022FWDocuments>

## PGDipPracPsych(ABA) Entry Requirements

In addition to fulfilling the requirements set out in the appropriate University of Waikato regulations students must meet the School of Psychology requirements for entry into the programme. The School of Psychology requirements are:

- A Masters or Doctoral degree specialising in Behaviour Analysis.  
Where a candidate has not completed a named degree in Behaviour Analysis, the School of Psychology will assess whether sufficient graduate-level papers and a thesis/dissertation in the specialisation have been taken to allow entry. Students may be required to take extra course work prior to or concurrently with the programme.
- Ongoing, full-time or part-time employment (either paid or unpaid) in NZ which provides the opportunity to practice Behaviour Analysis within an organisation that allows this work to be used as an internship.  
Whether the employment requirement is met will be determined by the School of Psychology from the job description. A signed letter of agreement from the candidate's organisation/manager is also required.
- The availability of field supervision for PSYCH553.  
Field supervision should be from a Registered Psychologist
- The availability of a place in the programme,  
This is determined by the class size at the time of application and by the availability of University-based supervision

Entry is subject to the approval of the Chair of the School of Psychology.



## Applying for Entry into the PGDipPracPsych(ABA)

Before applying formally for entry into this programme candidates should contact the School of Psychology to discuss their plans, including the suitability of the employment and the availability of appropriate supervision - [behavioural.psychology@waikato.ac.nz](mailto:behavioural.psychology@waikato.ac.nz) . They will be put in touch with the appropriate staff to talk about this.

Applications are called for towards the end of the year with a deadline of mid-October – see application link below for dates.

Once accepted into this programme the student must apply to the NZ Psychologists Registration Board to register as a Psychology Intern (see **NZ Psychologists Board** web site for fees and details of how to apply for this:

[www.psychologistsboard.org.nz](http://www.psychologistsboard.org.nz)

Applications will require the following documentation:

- Application for qualification in MyWaikato
- Internal School Application
- A Statement of Purpose
- Your Curriculum Vitae
- Academic Transcript
- Thesis Abstract
- Two Letters of recommendation from Referees
- An Agency Letter of Support from the employer to confirm the employment is appropriate for the programme and details of field supervision
- An onsite supervisor's Curriculum Vitae
- Job description

Click the link: [Information about the ABA Programme](#)

More information is available through the University of Waikato website

[www.waikato.ac.nz](http://www.waikato.ac.nz)

[www.waikato.ac.nz/fass/about/psychology/research/behaviour-analysis](http://www.waikato.ac.nz/fass/about/psychology/research/behaviour-analysis)

## **Certification as Board Certified Behaviour Analyst under the Behaviour Analyst Certification Board, Inc. (BACB)**

There are two levels of certification provided by the Behaviour Analyst Certification Board:

- Board Certified Assistant Behaviour Analyst (BCaBA<sup>®</sup>) and
- Board Certified Behaviour Analyst (BCBA<sup>®</sup>).

Both require the candidate to complete a specified number of hours in academic course work covering specific content areas, a specified number of supervised hours of appropriate practical experience and to pass an examination run by the BACB<sup>®</sup> (see [www.bacb.com/](http://www.bacb.com/)).

### **Verified Course Sequences and Coursework Hours**

The School of Psychology at the University of Waikato course sequences are verified by the ABAI as providing the academic course work hours required for a student to apply to sit the certification examination to become a BCBA<sup>®</sup>.

The BACB<sup>®</sup> specifies the coursework hours required in a range of content areas. Coursework hours for BCBA<sup>®</sup> must all be from graduate/postgraduate courses. The BACB<sup>®</sup> Task List (Fifth Edition) is the basis of the present coursework sequence. The Fifth Edition Task List applies to the certification examination from 2022.

The course content and associated hours for the course sequences at the University of Waikato from 2018 meet the BACB<sup>®</sup> requirements associated with the Fifth Edition Task List. Completing any of the courses given here will give a credit of the number of coursework hours shown for the content areas indicated.

## ABAI Verified Course Sequences

### The ABAI Verified Course Sequence for a Board Certified Behaviour Analyst®

*This table lists the course content required by the BACB® for certification as a BCBA® with the 4<sup>th</sup> Edition Task List.*

Content Area	Hours
<b>A. Ethical &amp; Professional Conduct</b>	45
<b>B. Concepts &amp; Principles of Behaviour Analysis</b>	45
<b>C. Research Methods in Behaviour Analysis</b>	
• Measurement (incl. Data Analysis)	25
• Experimental Design	20
<b>D. ABA</b>	
• Identification of the Problem & Assessment	30
• Fundamental Elements of Behaviour Change & Specific Behaviour Change Procedures	45
• Behaviour Change Systems	10
• Intervention & Behaviour Change Considerations	10
• Implementation, Management & Supervision	10
<b>E. Discretionary</b>	30
Total	270

### The University of Waikato approved BCBA® course sequence

The University of Waikato approved BCBA® coursework sequence (4<sup>th</sup> Edition) at the University of Waikato consists of the graduate/postgraduate courses: PSYCH538, PSYCH560, PSYCH561, PSYCH577, PSYCH551 and PSYCH552. Completion of these six courses gives the hours required in all content areas. These courses together give 276 course work hours.

Students who also take PSYCH587 will gain 316 coursework hours.

The following table gives the coursework hours and the course numbers for the University of Waikato Verified Course Sequence (VCS).

This table gives course content and coursework hours for each of the graduate courses approved by the BACB® as being appropriate for certification as a BCBA® at the University of Waikato based on the 5<sup>th</sup> Edition Task List.

This table lists the course content required by the BACB® for certification as a BCBA® with the 5<sup>th</sup> Edition Task List

Content Area	Required Hours
BACB Compliance Code and Disciplinary Systems; Professionalism*	45
Philosophical underpinnings; Concepts and Principles	90
Measurement, Data Display, and Interpretation; Experimental Design*	45
Behaviour Assessment	45
Behaviour-Change Procedure; Selecting and Implementing Interventions	60
Personnel Supervision and Management	30
<b>Total</b>	<b>315</b>

This table gives course content and coursework hours for each of the graduate courses that make up the VCS at the University of Waikato based on the 5<sup>th</sup> Edition Task List.

Content Area	PSYC/H							Total	Req
	538	560	561	577	587	551	552	BACB required Hrs	Actual Hrs
<b>BACB Compliance Code &amp; Disciplinary Systems; Prof.</b>							45	<b>45</b>	<b>45</b>
<b>Philosophical underpinnings; Concepts &amp; Principles</b>			45					<b>90</b>	<b>90</b>
<b>Measurement, Data Display, &amp; Interpretn; Exp. Design*</b>				45	10			<b>45</b>	<b>55</b>
<b>Behaviour Assessment</b>	15				20	30		<b>45</b>	<b>65</b>
<b>Beh.-Change Procedure;</b>	25	10			10	25		<b>60</b>	<b>70</b>



<b>Selecting &amp; Impl. Interventions</b>									
<b>Personnel Supervision and Management</b>	5	5			5	20		30	35
<b>Total Hrs</b>	<b>45</b>	<b>45</b>	<b>45</b>	<b>45</b>	<b>45</b>	<b>100</b>	<b>45</b>	<b>315</b>	<b>360</b>

These courses may be taken as Independent Paper Credits (IPCs) or as part of various qualifications (see earlier).

Students completing a MAppPsy(BA) followed by a PGDipPracPsych(ABA) will cover the full course work hours required for a BCBA®.

Students who already have an appropriate masters or doctorate degree who are undertaking the full VCS may take PSYCH551 and PSYCH552 as NET courses with permission. These two courses can be taken once the student has completed or started PSYCH538, PSYCH560, PSYCH561 and PSYCH577. These courses can form part of a post-masters PGDip(Psych) or PGCert(Psych).

## **BACB Practicum**

The course PSYCH553 - The Practice of Psychology (ABA) from the Postgraduate Diploma in the Practice of Psychology in Applied Behaviour Analysis should provide opportunity for students to gain BACB supervised practicum hours. Students who also wish to work towards the BCBA<sup>®</sup> credential can use their internship towards the supervised practice requirements of the BACB, but they will need to arrange their own supervision for this. For further details of the BACB requirements refer to the BACB web-site, as these requirements change from time to time: <https://www.bacb.com/bcba/#2022FWDocuments>.

For further details regarding the requirements, and what is considered appropriate experience, please check the BACB web-site.

## **The BACB<sup>®</sup> Experience Practicum Standards**

These are outlined at: [www.bacb.com/index.php?page=69](http://www.bacb.com/index.php?page=69)

## **Appropriate Clients**

These may be any persons for whom behaviour-analytic services are appropriate. However, the supervisee may not be related to the client or the client's primary caretaker or be the client's primary caretaker. Supervisees must work with multiple clients during the experience period.

## Eligibility to sit the BACB® Certification Examination

Eligibility to sit this examination is assessed by the BACB®

Students at the University of Waikato who complete the verified course sequence will meet the course work requirements to apply to the BACB® to sit the examination to be certified as BCBA®.

**Supervised Independent Fieldwork:** Students who complete the PGDipPracPsych(ABA) may choose to gain appropriate supervised experience to meet the practical experience requirements to apply to the BACB to sit the examination to be certified as a BCBA® using the BACB *Supervised Independent Fieldwork* category. This practice must be completed following the BACB requirements and is arranged by the student privately and not by or through the University.

Supervised Independent Fieldwork hours can be started once the course work has been started. In gaining this practical experience the student needs to follow the BACB experience standards carefully, they need to find a BCBA® as supervisor, and then follow the BACB supervision requirements.

## Doctorate in Philosophy Programme (PhD) in Behaviour Analysis

The University of Waikato offers a research-only PhD programme. Students with a background in any area of Behaviour Analysis are welcome to apply. Staff in the School of Psychology can support behaviour analysis research with either human or animal subjects and over a range of experimental and applied topics.

There is no coursework in a research-only PhD. Students must develop a research programme which they then conduct over two to three years under supervision. This research programme and its results are then written up as a thesis that is submitted for examination. It is possible to write up components of the research and submit these to relevant journals for consideration for publication as they are completed and prior to the completion of the whole thesis.

The School of Psychology website contains some information on past and ongoing research topics and the University of Waikato website provides access to information on staff publications.

See: <https://www.waikato.ac.nz/research/publications.shtml>

If you are interested in the PhD programme, please get in contact with any of the behavioural staff to discuss potential topics and supervision.

**For further information on any of the above contact:**

School of Psychology  
The University of Waikato  
Private Bag 3105  
Hamilton 3240  
New Zealand  
Email: [behavioural.psychology@waikato.ac.nz](mailto:behavioural.psychology@waikato.ac.nz)  
Tel: +64 7 838 4032  
Fax: +64 7 856 2158

International students should also email [international@waikato.ac.nz](mailto:international@waikato.ac.nz)

<https://www.waikato.ac.nz/study/subjects/behaviour-analysis>



THE UNIVERSITY OF  
**WAIKATO**  
*Te Whare Wānanga o Waikato*

The University of  
Waikato

Private Bag 3105  
Hamilton  
3240 New  
Zealand  
Toll Free: 0800 WAIKATO  
Website: [www.waikato.ac.nz](http://www.waikato.ac.nz)

Division of Arts, Law, Psychology  
& Social Sciences

Phone: +64 7 837 9222  
email: [arts@waikato.ac.nz](mailto:arts@waikato.ac.nz)  
Toll free: 0800 800 145  
Website: [www.waikato.ac.nz/wfass/](http://www.waikato.ac.nz/wfass/)