



Wilf Malcolm Institute
of Educational Research

Te Pūtahi Rangahau Mātauranga o Wilf Malcolm

THE UNIVERSITY OF WAIKATO

**Collaborative,
Innovative Education
Research**



TE KURA TOI TANGATA
FACULTY OF EDUCATION



THE UNIVERSITY OF
WAIKATO
Te Whare Wānanga o Waikato

Who are we?

Teams of dedicated researchers and support staff from WMIER, Te Kura Toi Tangata Faculty of Education and The University of Waikato.



What we do?

The Wilf Malcolm Institute of Educational Research (WMIER) carries out innovative and collaborative research that tackles the biggest challenges education faces today, and that makes a real difference to education policy and practice. The Institute provides advice and support in the scoping and design of research projects and provides the infrastructure to ensure the successful management, completion and dissemination of research.

WMIER produces a wide range of educational research and welcomes enquiries relating to our work, publications and outputs as well as

opportunities for involvement in research work. We can provide input and resources for any aspect of education research projects, including the design and management. We welcome requests for proposals, enquiries about current or future research and collaborative partnerships.

WMIER was established by Te Kura Toi Tangata Faculty of Education, and contributes strongly to the Faculty's world-class reputation for research-based teaching and research outputs.

The following information highlights our research themes, centres and units and published journals. For access to this information and more please see our website: www.waikato.ac.nz/wmier

Follow us on Twitter
@WMIER_RESEARCH

Collaborative, Innovative, Education Research

Research Themes

WMIER's research can be categorised into the following themes:



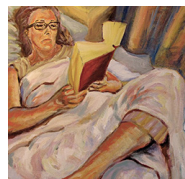
Curriculum pedagogy & assessment



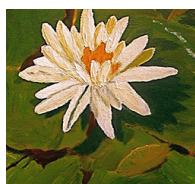
Early years



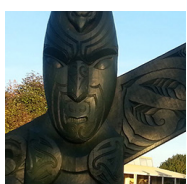
Human development and counselling



Language, literacy and arts



Leadership and policy



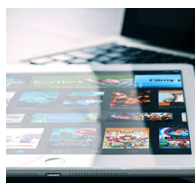
Maori education



Science, maths, technology & environment



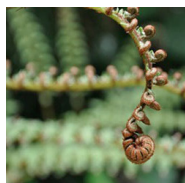
Sport and leisure



Digital learning



Transitions



Threshold concepts



Teaching and learning

Centres and Units

WMIER contains specialised centres and units:



Early years



Video lab



Engineering education



Collaborative action research



Doctoral education research

Publications

WMIER publishes four journals:



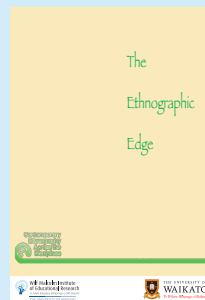
Waikato Journal of
Education



Teachers and
Curriculum



Dance Research
Aotearoa



The Ethnographic
Edge



Contact Us

Phone: +64 7 858 5171

Email: wmier@waikato.ac.nz

Follow us on Twitter

@WMIER_RESEARCH

Website: www.waikato.ac.nz/wmier

Physical Address:

University of Waikato
Te Kura Toi Tangata Faculty of Education
Gate 4, Hillcrest Road
Hillcrest, Hamilton 3216, New Zealand

Postal Address:

Private Bag 3105, Hamilton 3240, New Zealand