

# University of Waikato Library: Map Collection

## Pacific: Hawai'i

The Map Collection of the University of Waikato Library contains a comprehensive collection of maps from around the world with detailed coverage of New Zealand and the Pacific.

Maps indicated with an **S** are held in storage on Level 1. Please ask a librarian if you would like to use one.

## Hawai'i

### General maps

Hawai'i (National Geographic)	1995	1: 850,000
Hawai'i (National Geographic)	1983	1: 865,100
Hawai'i (National Geographic) (Close-up : USA)	1976	1: 675,000
USA – Hawai'i (Reise)	2007	1 : 200,000
Hawaiian Archipelago – soundings	1965	1: 1,650,000
Honolulu Oahu (Nelles) 6 maps	2008	various
O'ahu official map guide	2000	various
City and County of Honolulu. The bus system map.	2008	various
Honolulu street map and Hawai'i (Gousha)	1986	various
Big Island of Hawai'i [tourist map]	2009	

### Island maps from the University of Hawai'i Press

Hawai'i (Big Island) plus 4 inserts	8th ed.	2011	1: 150,000
Kaua'i plus 2 inserts	7th ed.	2004	1: 150,000
Lana'i and Moloka'i 2 maps plus 2 inserts	5th ed.	2002	1: 150,000
Mau'i plus 2 inserts	8th ed.	2002	1: 150,000
O'ahu plus 3 inserts	7th ed.	2007	1: 150,000

### Atlases

Atlas of Hawai'i (Department of Geography, University of Hawai'i) 3rd ed. (held in <b>storage</b> )	1995	various
Hawai'i atlas & gazetteer (DeLorme)	1999	various

## University of Waikato Library: Map Collection

### Pacific: Hawai'i

#### Hawai'i Island. Topographic series. 1: 24,000

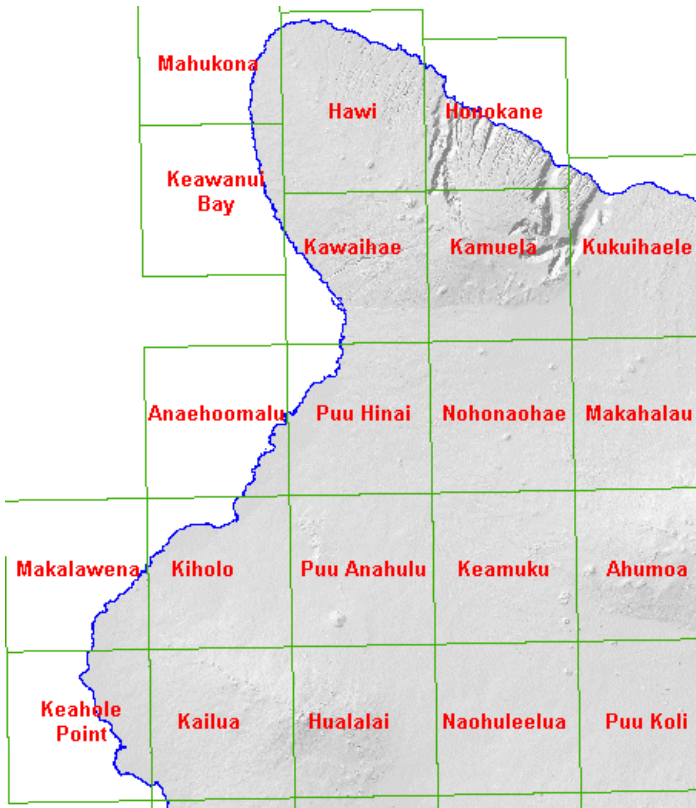
Editions are first unless stated. These maps are held in storage. Please ask a librarian if you would like to use one.

Ahumoa	1982	Kealakekua	1982	Pahala	1981
Akaka Falls	1981	Keamuku	1982	Pahoa North	1981
Alika Cone	1981	Keanakolu	1982	Pahoa South	1980
Anaehoomalu	1982	Keawanui Bay	1982	Papa	1981
Hawi	1957	Kiholo	1982	Papaaloa	1980
Hilo	1981	Kilauea Crater	1981	Papaikou	1981
Honaunau	1982	Kipuka Pakekake	1981	Piihonua	1981
Honoka'a	1957	Kookoolau	1982	Pohue Bay	1981
Honokane	1982	Kukaiua	1982	Pua Akala	1981
Hualalai	1982	Kukuihaele	1982	Punaluu	1982
Kahuku Ranch	1981	Kulani	1982	Puu Anahulu	1981
Kailua	1982	Mahukona	1982	Puu Hinai	1982
Ka Lae	1982	Makahalau	1981	Puu Hou	1981
Kalalua	1982	Makalawena	1982	Puukoli	1982
Kalapana	1981	Makaopuhi Crater	1981	Puulehua	1982
Kamuela	1982	Manuka Bay	1981	Puumakaala	1981
Kapoho	1981	Mauna Kea	1982	Puu O Keokeo	1981
Kau Desert	1981	Mauna Loa	1981	Puuo'o	1981
Kauluo Point	1982	Milolii	1981	Puupohakuloa	1982
Kaunene	1982	Mountain View	1963	Puuulaula	1982
Kawaihae	1982	Naalehu	1981	Umikoa	1982
Keaau Ranch	1980	Naliikakani Point	1981	Upper Piihonua	1981
Keahole Point	1982	Naohueleelua	1982	Volcano	1981
Keaiwa Reservoir	1981	Nohonaohae	1982	Wood Valley	1981

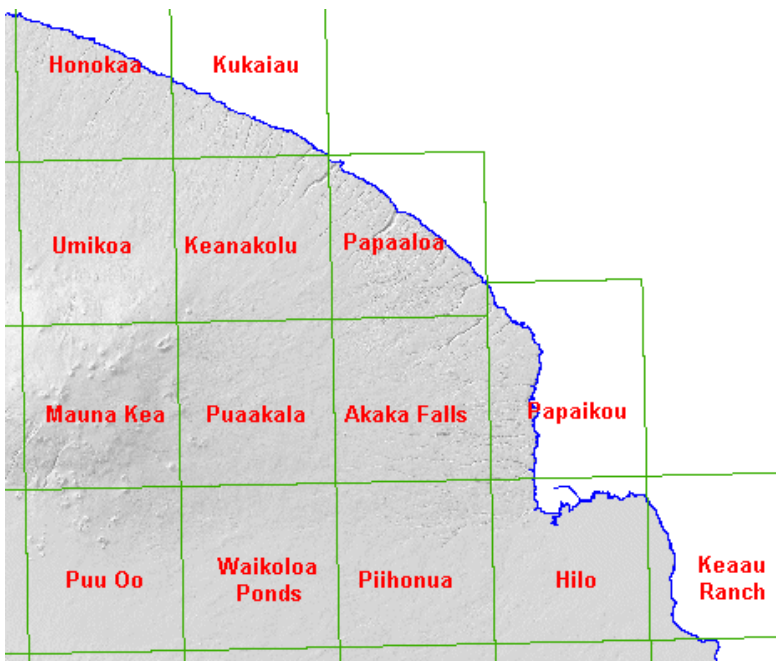
# University of Waikato Library: Map Collection

## Pacific: Hawai'i

### Key Map. Hawai'i Northwest



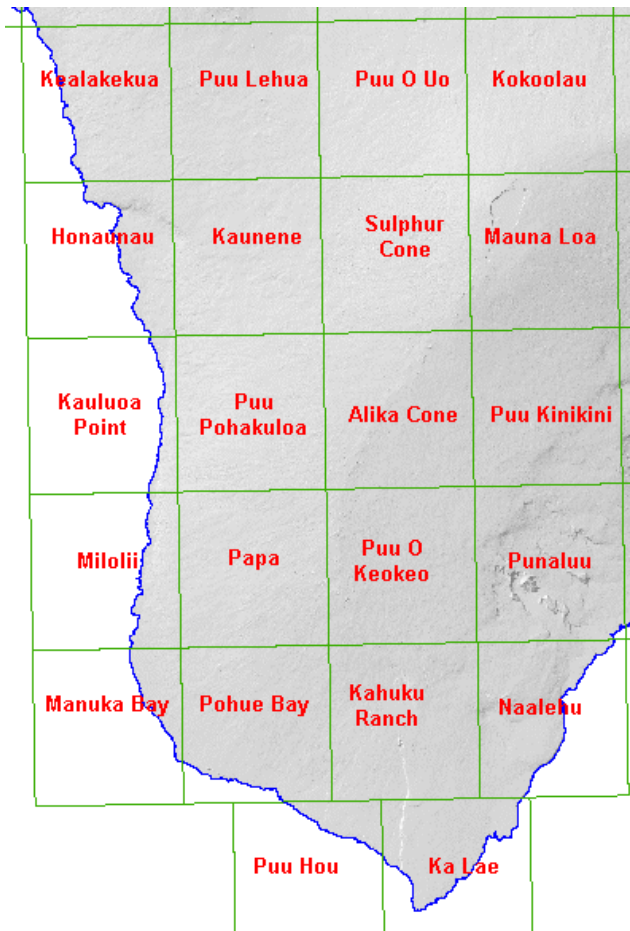
### Key Map. Hawai'i Northeast



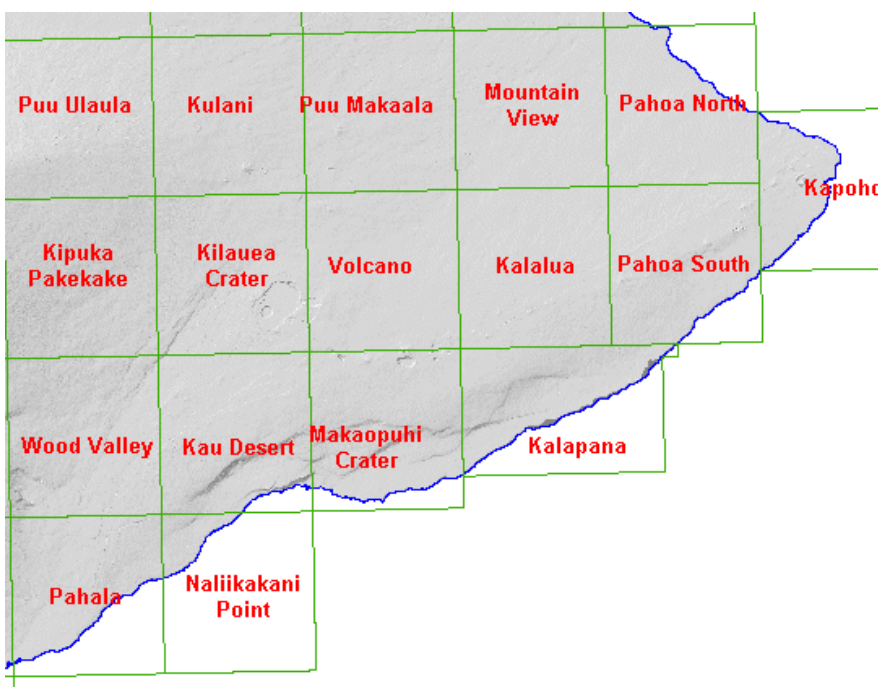
# University of Waikato Library: Map Collection

## Pacific: Hawai'i

### Key Map. Hawai'i Southwest



### Key Map. Hawai'i Southeast



## University of Waikato Library: Map Collection

### Pacific: Hawai'i

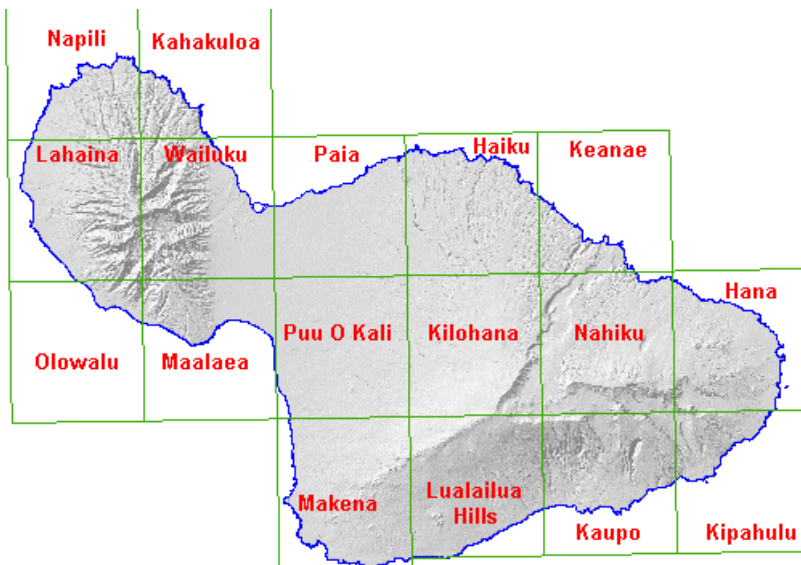
#### Kaua'i. Topographic series. 1: 24,000

Anahola	1983	Kapaa	1983	Makaha Point	1983
Haena	1965	Kekaha	1983	Waialeale	1983
Hanalei	1983	Koloa	1983	Waimea Canyon	1983
Hanapepe	1983	Lihue	1983		

#### Maui. Topographic series. 1: 24,000

Haiku	1983	Kipahulu	1983	Napili	1983
Hana	1983	Lahaina	1983	Olowalu	1983
Kahakuloa	1983	Lualailua Hills	1957	Paia	1983
Kaupo	1983	Maalaea	1983	Puu O Kali	1983
Keanae	1983	Makena	1983	Wailuku	1983
Kilohana	1983	Nahiku	1983		

### Key Map. Maui



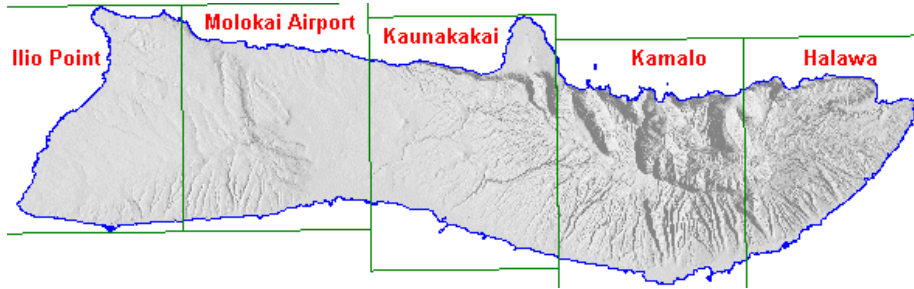
# University of Waikato Library: Map Collection

## Pacific: Hawai'i

### Molokai. Topographic series. 1: 24,000

Halawa	1952	Kamalo	1952	Molokai Airport	1952
Ilio Point	1952	Kaunakakai	1952		

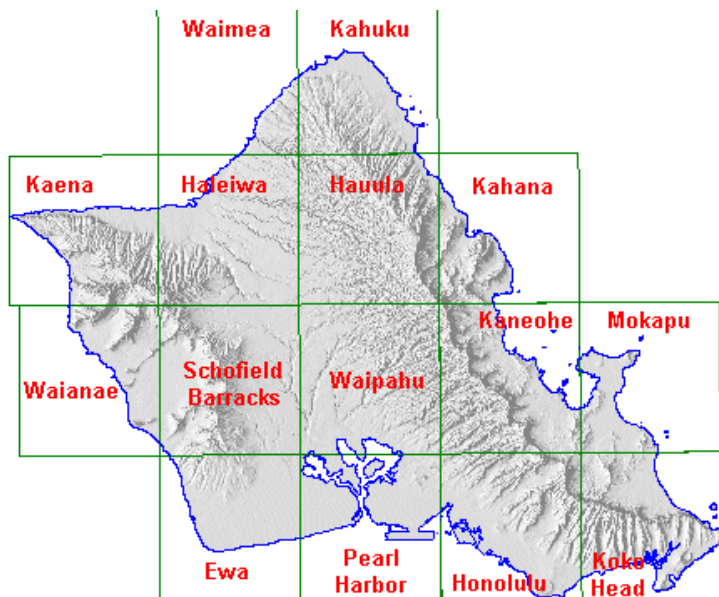
### Key Map. Molokai



### O'ahu. Topographic series. 1: 24,000

Ewa	1983	Kahuku	1983	Waianae	1983
Haleiwa	1983	Kaneohe	1983	Waimea	1983
Hauula	1983	Koko Head	1983	Waipahu	1983
Honolulu	1983	Mokapu	1983		
Kaena	1983	Pearl Harbor	1983		
Kahana	1983	Schofield Barracks	1983	Honolulu and vicinity	1954

### Key Map. O'ahu



## University of Waikato Library: Map Collection

### Pacific: Hawai'i

Hawai 'i. Topographic series. 1: 62,500

#### Hawai 'i Island

Kohala	1913		Honomu	1915		Kilauea	1921
Waipio	1916		Kailua	1928		Puna	1922
Hamakua	1915		Kaohe	1927		Kalapana	1924
Keahole	1928		Humuula	1930		Hoopuloa	1928
Puako	1928		Makuu	1924		Honuapo	1924
Waikii	1931		Honaunau	1928		Pahala	1923
Mauna Kea	1930		Mauna Loa	1928		Ka Lae	1923

#### Other Islands

Kauai	1912		Maui	1957		O'ahu	1954
Lanai	1923		Nihau	1926		Molokai	1952