



Hillcrest Road



Pedestrian Spine with covered way at the start of entrance 2a

6.1 Hillcrest Road



- Buildings of varying heights (up to 20m)
- Avenue of deciduous trees for good autumn colour
- Active street front with retail and commercial opportunities
- Clear / uncluttered ground plane

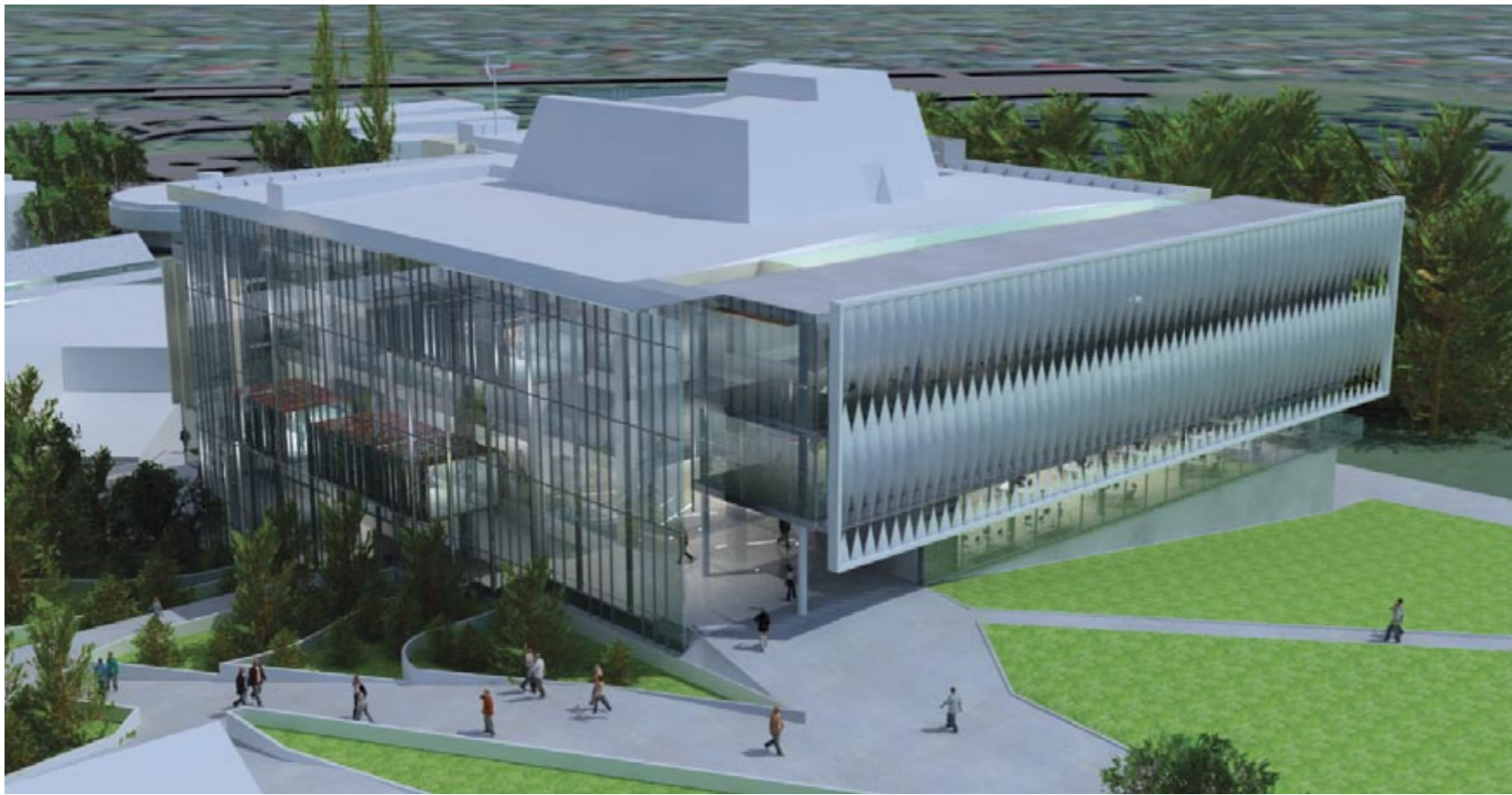
6.2 Main Campus Access: Start of Main Pedestrian Spine at entrance 2a

- 5m wide pedestrian spine at start of entrance 2a, then widen to 8/10m typically
- 3m wide pedestrian covered way up to existing bus stop area (integrated with building if required)
- Incorporate seating & lighting

6.3 Campus Plaza



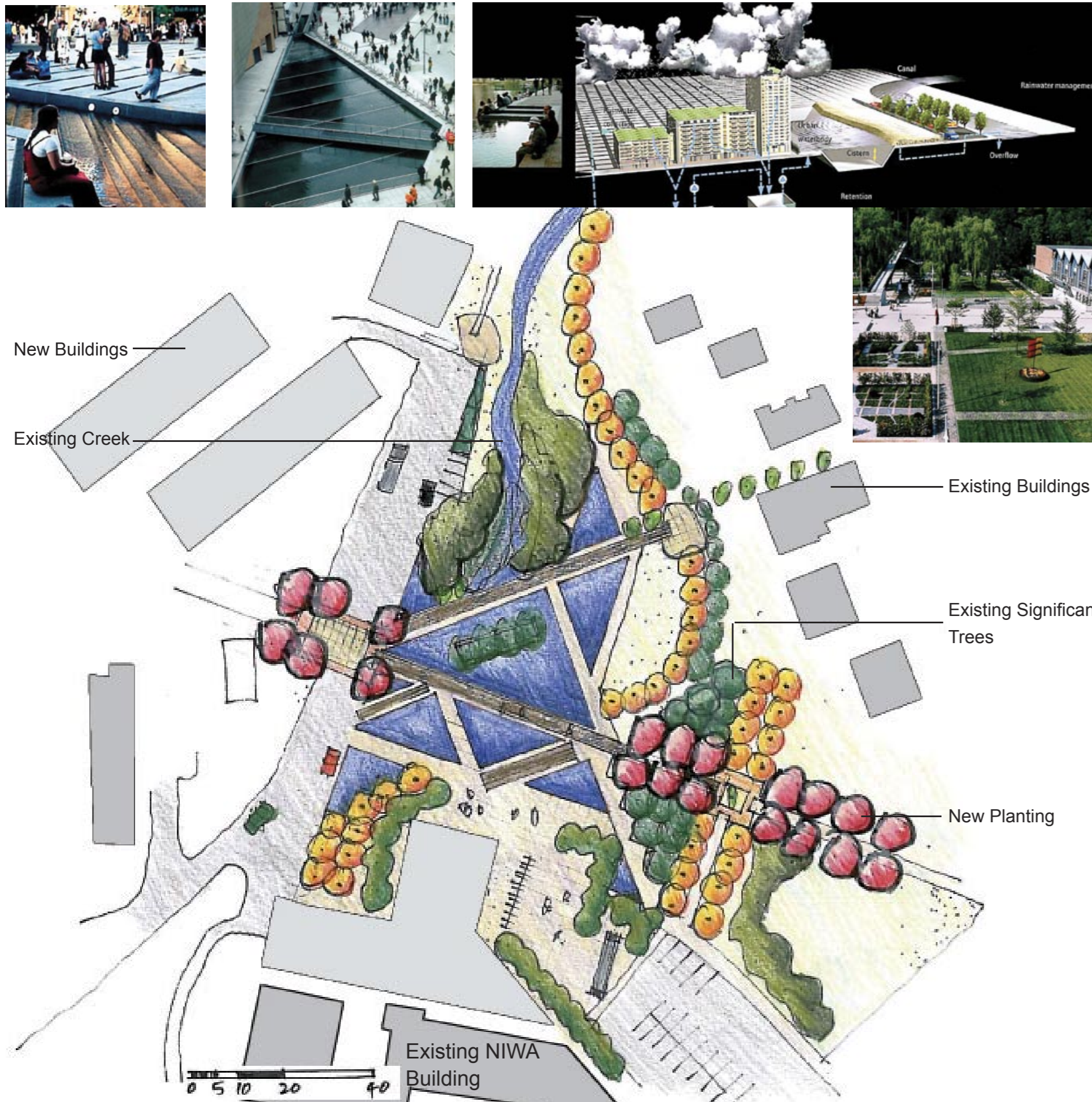
The campus central plaza adjoining the library is an important hub and located at the intersection of the two major pedestrian spines, with direct access to the lake and open fields.



Proposed plaza spaces outside existing (modified) library.

Images: Warren & Mahoney/ Maunsell architects

6.4 New East Campus Landscape



The new landscape centre provides a social and recreational space for the east campus. The main design features are:

- Provide focus / anchor for east campus
- A series of water features continue the water theme of the campus and also reinforce the existing creek
- Paved pathways with seating incorporated at raised edges of water features
- An avenue of new trees strengthens the main pedestrian spine and reinforces the existing planting

Possible new eastern Hub: indicative only

February 2008

6.5 Knighton Road



The views across the lakes from Knighton Road towards the Performing Arts Centre is to be strengthened. The street address of the lakes to be improved as follows:

- Clear uncluttered ground plane to maintain views to the Arts Centre and beyond. Keep planting to the sides.
- Create focus at front of lakes with sculpture and lighting.
- Provide access to water by paving upto water's edge.
- Maintain path access to ponds surrounds



Possible improvements to Knighton Road frontage: indicative only