

2025 DONOR HIGHLIGHTS

FOUNDATION
TE POU TAUNAKI



THE UNIVERSITY OF
WAIKATO
Te Whare Wānanga o Waikato



CONTENTS

Who we are: Te Pou Taunaki – The University of Waikato Foundation 4

Leading with generosity: Messages from our Patron and Foundation Chair 5

Making the impossible possible 6

Donor support shines a light on New Zealand's biodiversity gap 7

Foundations in philanthropy 8

Celebrating a life well lived 9

Facility for the future 10

Building brighter futures in the Bay 11

Investing in the Arts 12

Investing in Women's Success 13

The Foundation in numbers 14

Backing bright minds: Alumnus supports academic talent 15

How can you make an impact? 16

Our Donors 17



WHO WE ARE



TE POU TAUNAKI – THE UNIVERSITY OF WAIKATO FOUNDATION

The University of Waikato Foundation – Te Pou Taunaki serves as a vital bridge between generosity and impact. As an independent charitable trust, it is the gateway through which the University of Waikato accepts donations and ensures they are directed to areas that create meaningful change.

As an independent charitable trust that administers donations to the University and distributes funds to chosen areas, every contribution, no matter the size, empowers students to unlock their full potential while amplifying the University's positive influence on society and the economy. Donor support support fuels scholarships, drives innovative research, enhances learning environments, and strengthens the Endowment Fund.

Donations to the University's Foundation are an investment in our long-term vision, enabling strategic growth and sustainability for generations to come.

LEADING WITH GENEROSITY



A WORD FROM OUR PATRON

Sir John Gallagher, KNZM, KStJ

Generosity fuels dreams and ambitions, strengthens communities, and has impact far beyond our own generation. It is through the continued support of those who recognise the value of education, research, scholarly aptitude and academic thinking, that we are able to shape a brighter future.

In 2024, the University of Waikato celebrated 60 years of a uniquely New Zealand model of university education. Founded by the community, for the community, the University of Waikato carries a rich legacy full of remarkable achievements that have shaped us into the institution we are today.

Every donor of The University of Waikato's Foundation – Te Pou Taunaki plays a crucial role in helping us achieve our objective of supporting the University to achieve its strategic aims and paving a sustainable path allowing accessible education for all.

Thank you for your ongoing support. Together we are helping to shape a brighter future.



A WORD FROM OUR FOUNDATION CHAIR

Dr Andrew Smith

We are deeply grateful for the generosity of our alumni, staff and wider community. Your support makes a real difference. Thanks to your contributions, we're advancing initiatives that benefit students, enhance teaching and research, and strengthen our community connections.

Philanthropy plays a vital role in helping us respond to emerging needs and opportunities. From scholarships that ease financial pressure to funding that drives innovation and engagement, your generosity is shaping a more inclusive and forward-looking university.

It's also inspiring to see more organisational donors joining our mission. Their support reflects a shared commitment to investing in the future, especially in areas critical to our society and economy. This includes empowering students in health and nursing, supporting climate change research, and advancing innovation across key industries.

Every gift, no matter the size, contributes to a larger story of impact. It creates opportunities, supports excellence, and sends a powerful message: that our students and staff are backed by a community that believes in their potential.

To all our donors, thank you. Your support is essential, and we are proud to partner with you in building a university that is academically strong, socially responsive and future focused.

MAKING THE IMPOSSIBLE POSSIBLE

For the one in four New Zealanders who live with an impairment, accessing tertiary study can be a challenge. But a \$60,000 gift from CCS Disability Action Waikato will ease that challenge for undergraduate students studying at the University of Waikato.

The CCS Disability Action Award, established in 2024, provides financial support to students with disabilities from the Waikato, King Country and Coromandel regions to help remove barriers to learning.

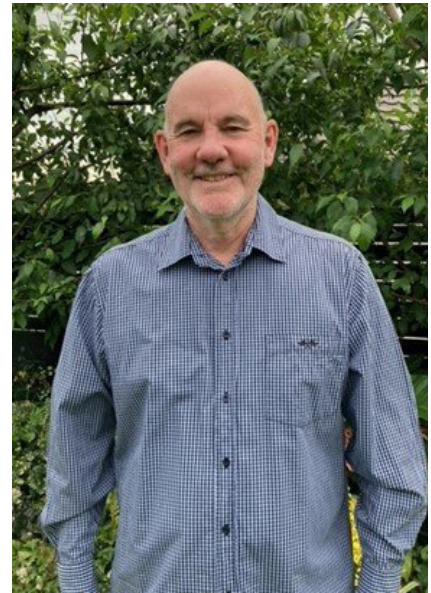
As the largest pan-disability support and advocacy organisation in Aotearoa, CCS Disability Action supports all people with any kind of impairment, and is at the forefront of service provision, advocacy and information sharing in the disability sector.

"Disabled people can influence the wider community," explains Mike Garrett, CCS Disability Action Waikato Chair. "Their skills, gifts and talents in a mainstream workplace provide real value. If we want to see diversity in our workplaces, we need to see that going through our universities."

CCS Disability Action Waikato's generous financial support will provide up to four awards of \$5,000 presented annually.

Success stories of people living with a disability who finish their degrees and embark on a career are always inspirational," Mike says. "At CCS Disability Action Waikato we're thrilled to be able to extend our support for these students who we know will make a difference in whichever path they choose."

The CCS Disability Action Awards are supported by the University of Waikato's Accessibility Services, which are dedicated to fostering a collaborative environment for all students with impairments, supporting them to achieve success in their studies. The Accessibility Services team aims to empower students to realise their academic goals by working with them to unlock their full potential.



SCHOLARSHIP STRIKES A CHORD FOR EMMA



The Feh! Charitable Trust (FCT), founded in 1987 by Peter and Rae Feh!, aims to promote the arts, relieve poverty, and advance education and other charitable purposes that are beneficial to the community.

In 2023, The Feh! Charitable Trust, in partnership with the University of Waikato, established the Feh! Charitable Trust Scholarship in Music.

In 2024, Emma Jones was named the inaugural recipient of the Feh! Charitable Trust Scholarship in Music. A gifted musician and passionate advocate for the arts, Emma has already made a significant impact within the University community. In 2024 she was recognised as the University of Waikato Creative and Performing Arts Person of the Year, which is a testament to her dedication, creativity and leadership in the arts.

"The support from the Feh! Charitable Trust has been invaluable to my studies and journey. I am deeply grateful and very privileged to be a recipient of their generosity, as it has enabled me to fully dedicate myself to my studies and immerse myself in a range of enriching experiences."

DONOR SUPPORT SHINES A LIGHT ON NEW ZEALAND'S BIODIVERSITY GAP



Dr Kiri Wallace

“ We are pleased to support Eco-index to provide cutting-edge intelligence for land planning and biodiversity investment. Their work to bring data and technical expertise together is important for many large-scale environmental projects. ”

Matthew Monahan,
Co-Steward of Biome Trust.

First launched in November 2023, the online ecosystem restoration map for New Zealand is an open-access digital tool that aims to address information gaps in biodiversity restoration.

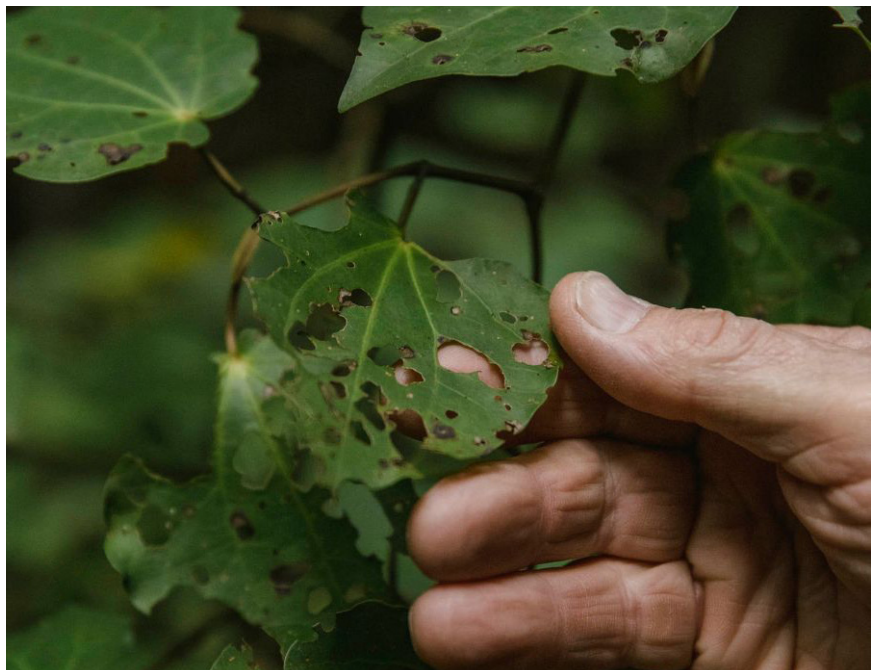
New Zealand's declining biodiversity has been given a helping hand by the generous support of international philanthropic organisation, Biome Trust.

A \$160,000 grant will help University of Waikato expert Dr Kiri Wallace further address gaps in New Zealand's biodiversity restoration. Support from Biome Trust, an international philanthropic organisation focused on supporting environmental projects, has helped the renowned Eco-index Initiative to launch version 2.0 of its Ecosystem Reconstruction Map.

Ecosystem reconstruction involves recreating native habitat in areas where it has been completely removed. This often occurs in retired pasture, urban parks, or along waterways and usually involves planting native trees and shrubs in conjunction with weed and pest control.

The Ecosystem Reconstruction Map shows users where reconstructing native ecosystems is the highest priority, what kind of ecosystems are appropriate, and where and how many hectares need to be reconstructed to reach the 15% cover goal.

The Biome Trust grant has also helped Eco-index to develop and share two digital products that organisations can use to harness the reconstruction map's data within their own systems. These have so far been provided free to Te Arawa Lakes Trust and Taranaki Mounga Project.



Scan to explore the map
<https://eco-index.nz/ecosystem-reconstruction-map>



BIOME TRUST

FOUNDATIONS IN PHILANTHROPY



Sir John Gallagher and Lady Gallagher

Sir John and Lady Gallagher are regular attendees of performances and public lectures in the Gallagher Academy of Performing Arts (GAPA), but their support goes beyond that of an appreciative audience. Rather, it extends to the very foundations of the University of Waikato's purpose-built, award-winning performing arts and events centre.

As trustees of the Glenice and John Gallagher Foundation, their ongoing philanthropic support of GAPA provides students with an enriching performance experience, world-class facilities, and an internationally recognised stage upon which to launch their careers.

University of Waikato engineering students have also experienced the generous support of Sir John and Glenice with the establishment of the Sir John Gallagher Chair in Engineering. The \$1.5million donation, designed to help raise the profile of engineering at the University, helps to facilitate industry and research networks, providing opportunities for engineering staff and students, and generating research critical to advancing the sector.

"The Chair in Engineering role has allowed me, with Sir John's full support, to progress engineering in the region by helping develop emerging engineers who have the freedom to create innovative, applicable solutions – those are the people who will drive our industry further." - Professor Mike Duke, Sir John Gallagher Chair in Engineering, University of Waikato.

The Hamilton Children's Reading Centre has also received generous financial support from the Glenice and John Gallagher Foundation.



The Gallagher Academy of Performing Arts is home to the teaching and performance of the creative arts and has established an international reputation for the quality of the venue and the achievements of our graduates

CELEBRATING A LIFE WELL LIVED

It was 1969 when Brian Silverstone joined the academic staff at the University of Waikato as a lecturer in Economics. The now Honorary Fellow only intended to stay two years. Four decades later, Brian retired from the University but his involvement with the institution that enriched his career and educated his children continues. Brian, Anne and son Tim are generous donors to the University of Waikato Foundation.

"We feel very connected to the University. It's always been a big part of our lives, and we wanted to recognise that," says Anne Silverstone.

The Silverstones are associated with two prizes, funded by donations from family, colleagues and friends: The Brian Silverstone Prize in Macroeconomics and the Catherine Silverstone Memorial Prize in English. The latter is in recognition of Brian and Anne's daughter Catherine, an alumna of the University of Waikato, who died in 2020 at the age of 45.

"Catherine was proud of her New Zealand state education that took her from Knighton School, Hillcrest High School and Waikato University to Sussex University in the UK and to academic positions at Anglia Ruskin University in Cambridge and Queen Mary University of London," Brian says. "At the time of her death, Catherine was Reader and Head of the School of English and Drama at Queen Mary and was held in such high esteem that the university promoted her posthumously, and without precedent, to full professor."

Catherine's short life was well lived and in her academic roles she left an impact on those she taught, worked with and studied alongside.

“Academic prizes and scholarships – those extra lines in a CV – can lead to life-enhancing opportunities,” says Brian. “We saw the enjoyment that Catherine gained from her education and awards, and we want other Waikato students to experience similar success.”

”



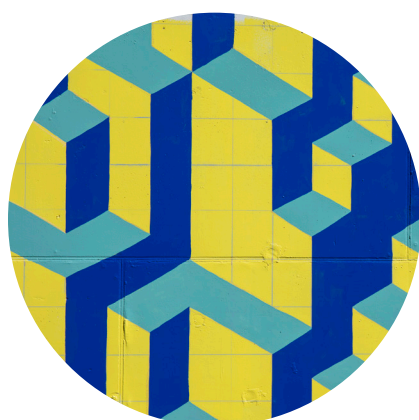
Catherine Silverstone Memorial Prize in English

Established in 2021 in memory of the life and career of Professor Catherine Silverstone, a University of Waikato alumna and literature and drama academic, this prize, valued at \$1,000, is awarded annually to the best student completing an undergraduate major in English.



Brian Silverstone Prize in Macroeconomics

Established in 2010 by colleagues, past students and donors in recognition of Brian's tenure with the University of Waikato, this prize, valued at \$1,000, is awarded annually to the best student enrolled in ECON5501 (Macroeconomics Analysis) or an equivalent postgraduate paper in Macroeconomics.



FACILITY FOR THE FUTURE

Generous community support is paving the way for a world-class marine research and education facility in Sulphur Point, Tauranga. A \$10 million donation from the Wright Family Foundation to the University of Waikato's new state-of-the-art facility reflects a shared commitment to education, innovation and research.

Instigated from a heartfelt drive to enable individuals to achieve their full potential through education, the objective of The Wright Family Foundation is to benefit New Zealand communities, youth and families, and promote togetherness through advancing education.

“The Foundation is excited to support the advancement of marine research and education in the region, and to see the development of a multi-use facility designed to connect with the Bay of Plenty community through public programmes and education opportunities.”

Sam Wright, Trustee

The new facility will be more than a research hub. It will serve as a cornerstone for nationally and globally significant scientific research, education and community engagement. Purpose-built research laboratories, classrooms and public engagement spaces will further enhance the University's ground-breaking marine research currently conducted out of its globally renowned Coastal Marine Field Station and provide unique access to Aotearoa's largest working harbour.

“This facility will be a community asset that further cements the Bay of Plenty's international reputation for marine sciences, biotechnology, and aquaculture”, says Professor Alister Jones, Deputy Vice-Chancellor. “That's why it's important that we partner with organisations who share our values.”

“The generous support from the Wright Family Foundation, a charitable trust that truly understands the value of education and the role it plays in providing a strong social, cultural and economic foundation for future generations, strengthens our ability to tackle some of the world's most pressing environmental and sustainability challenges.”



The Wright Family Foundation is the founding partner and sponsor of the University of Waikato's new Marine Research and Education Facility. The facility is due for completion in 2027-28.



The Wright Family Foundation supports individuals to achieve their full potential through education, health and environmental initiatives.

Discover more

www.waikato.ac.nz/about/major-projects/marine-research-and-education-facility



BUILDING BRIGHTER FUTURES IN THE BAY



TAURANGA CAMPUS

The University of Waikato has a proud legacy in the Bay of Plenty and its communities. Since delivering our first programmes in 1996 to opening our Tauranga campus in the central business district in 2019, a large part of our success has been the strong support from the local community, funders and donors.

We are committed to growing student numbers and shaping the city and the wider region by offering a full suite of programmes. With state-of-the-art teaching and research facilities, including science and engineering labs, a marine science centre and high-performance sports facilities, our vision is to offer the best of university study and a Bay of Plenty lifestyle.



SUPPORT FUTURE-FOCUSED RESEARCH

The University of Waikato's Tauranga campus is home to vibrant hubs of research excellence across Education, Psychology, Health, Sport and Human Performance, Engineering, Information Technology, and Business. Each of these areas offers unique opportunities to drive innovation and create lasting benefits for the region. By supporting research in Tauranga, you can play a pivotal role in advancing knowledge and fostering impactful solutions that will shape the future of our communities.

BE PART OF THE SOLUTION

Protecting the environment stands as one of the most pressing challenges of our time, and the University of Waikato is at the forefront of tackling it. Through pioneering climate-focused education and groundbreaking research, we are shaping solutions for a sustainable future. Our world-class work in coastal marine science is making global waves, and we invite you to be part of this transformative effort by supporting our research through philanthropically funded Chairs. Together, we can drive innovation and safeguard our planet for generations to come.

INVESTING IN THE ARTS

SIR WILLIAM AND LADY JUDI GALLAGHER: ELEVATING THE ARTS

Music at the University of Waikato continues to thrive thanks to the exceptional generosity of Sir William and Lady Judi Gallagher whose long-standing commitment to the arts has created transformative opportunities for students and staff alike.

A cornerstone of their support is the Dame Malvina Major Chair in Opera, a role that has significantly elevated the University's profile in vocal performance and opera education. This position plays a pivotal role in mentoring emerging opera talent and fostering excellence in performance.

The Gallagher's contribution also extends to Te Pae Kōkako – The Aotearoa New Zealand Opera Studio (TANZOS), a premier postgraduate opera training programme based at the University. Through their support, the Gallaghers are helping to cultivate the next generation of professional opera singers in Aotearoa, providing them with world-class coaching, performance experience, and industry connections.

In addition, the Sir William and Lady Judi Gallagher Foundation Scholarship supports students across a range of disciplines – including computing and mathematical sciences, engineering, management, and music, with a particular focus on opera. Each year, up to eight students receive scholarships of up to \$10,000 each, easing financial barriers and enabling them to pursue their studies with confidence and focus.

The Gallaghers' philanthropic leadership exemplifies the profound impact that donor support can have on the arts. Their vision and generosity continue to shape the future of music education at The University of Waikato.



Sir William Gallagher and Lady Judi Gallagher.
Photo by Mike Walen at St Paul's Foundation Gala.

TE PAE KOKAKO THE AOTEAROA NEW ZEALAND OPERA STUDIO (TANZOS)

Te Pae Kōkako – The Aotearoa New Zealand Opera Studio (TANZOS) is an intensive, dedicated programme for aspiring singers that combines academic, professional and in-situ industry training. A long-held vision and dream of Dame Malvina Major, the programme prepares talented opera singers for both the New Zealand and international stage. Places on the TANZOS programme are on a scholarship-only basis and reflect the diversity of Aotearoa's up-and-coming opera stars.

The programme's name was gifted by Professor Tom Roa in his capacity as Te Mata Ahurangi of The University of Waikato. A local oral history of the Ngāti Apakura iwi avows that their tupuna, Pikirangi, had a pet kōkako, which he trained to sing a particular song that was full of meaning for his iwi.

The 'pae' is the kōkako's perch, where it gathers in strength before taking flight. Like the kōkako, our students come from all parts of Aotearoa New Zealand. TANZOS means that talented opera singers are encouraged to thrive in New Zealand and

prepare for the international stage, following the example set in the efforts of the Pirongia Te Aroaro o Kahu Restoration Society that has helped regenerate the kōkako.



Help to launch the opera
stars of the future
www.tanzos.org



Dame
Malvina
Major
Foundation



TE PAE KŌKAKO
TANZOS
THE AOTEAROA NEW ZEALAND OPERA STUDIO

INVESTING IN WOMEN'S SUCCESS



From left: Craigs' Tauranga General Manager Hayley Nelson, scholarship recipient Olivia Manninen, Craigs CEO Simon Tong, and Craigs Head of People and Performance Angie Smith.

Third-year Bachelor of Business student Olivia Manninen was awarded the Craigs Investment Partners Women in Business Scholarship in 2024.

Craigs launched the scholarship in 2022 to support more women into business and finance-related professions. The scholarship is part of the firm's broader commitment to women alongside its partnership with Global Women, which champions diversity in leadership, and the Craigs' Women's Wealth programme that has educated and empowered female investors since 2007.

The scholarship provides financial support and mentoring from a female senior leader at Craigs to a promising final-year female undergraduate student studying a Bachelor of Business or Bachelor of Management Studies (Hons) at the University of Waikato.

Olivia says the financial contribution will help her achieve her goal of completing her studies without student debt, but the mentoring is invaluable.

"I have been fortunate to receive other scholarships during my studies, but the commitment to a year of mentoring really sets the Craigs' scholarship apart. I am looking forward to having Hayley's guidance and support through my final year of study," says Olivia.

Craigs' Tauranga branch General Manager Hayley Nelson mentored the scholarship's inaugural recipient last year and will be Olivia's mentor, too.

Hayley sees her role as supplementing what Olivia learns through her studies with real-world experience, offering advice and support, and opening opportunities for Olivia through her and Craigs' networks.

"In many ways it is about representation and visibility in what have traditionally been male-dominated fields. The purpose of the scholarship is to support women into these fields and that's a financial commitment but also a commitment to walk alongside the recipient. Many scholarships start and end with a financial contribution, we are proud that ours includes dedicated time through the year, which can be priceless for the recipient," says Hayley.

"In May alone, we are able to extend invitations for Olivia to our Craigs' Women's Wealth event, the launch of the Western Bay of Plenty Women's Fund, and the Business Women's Network Speaker Series."

Olivia is majoring in Accounting and has already secured a graduate auditor position that will support her to become a chartered accountant once she completes her degree. She enjoyed studying accounting at school and is attracted to the range of career paths she can pursue by completing her CA. She is currently the student representative for Chartered Accountants ANZ and a sessional assistant for the University of Waikato.

Olivia says her strong desire to continue to live and work in the Bay of Plenty has played a role in her study and career decisions.

"I have spent time in Auckland and Wellington, and I really value the lifestyle we have here in the Bay of Plenty. Being able to get my degree at the Tauranga campus and secure a role with a local firm that will support me to build on my qualifications without moving away has been great," she says.



THE FOUNDATION IN NUMBERS



\$8.29 m

total donations
2020-2024



457

total number
of donors
2020-2024



1,013

number of
donations received
2020-2024



\$8,191

Average
gift value

WHO ARE OUR DONORS?



40%

Alumni



32%

Individual Donors



21%

Trusts and Foundations



7%

Organisations

STRENGTH IN IDENTITY

Huria Wharerau - 2025 Braemar Charitable Trust Scholarship in Nursing

Receiving the Braemar Charitable Trust Scholarship in Nursing is both an honour and a powerful affirmation of my identity, aspirations and commitment to serving my iwi and community through healthcare. It eases financial pressure and supports my goal of becoming a culturally responsive nurse who can advocate for whānau and help address health inequities. This scholarship strengthens my connection to Te Ao Māori and empowers me to focus on my academic and clinical development. I see it as both a taonga and a responsibility to uplift my community and contribute to the future of healthcare in Aotearoa.



BACKING BRIGHT MINDS: ALUMNUS SUPPORTS ACADEMIC TALENT

One of the University of Waikato's most accomplished alumni, Dr Andrew Smith, is proudly giving back to his alma mater by supporting the next generation of academic talent. As Chair of the University of Waikato Foundation, Dr Smith plays a pivotal role in advancing the University's mission through philanthropy and leadership.

Through the establishment of the Dr Andrew Smith Medal for Academic Excellence and the Distinguished Alumni Scholarship, Dr Smith is recognising and empowering outstanding students across the University.

Launched in 2022, the Dr Andrew Smith Medal for Academic Excellence is awarded annually to the most academically exceptional undergraduate student from any discipline. Since its inception, three remarkable students have received the honour. The most recent recipient, Kate Logan, achieved an A+ average while completing her Bachelor of Science, exemplifying the calibre of talent the medal seeks to celebrate.

"Receiving the Dr Andrew Smith Medal for Excellence was incredibly meaningful to me," says Kate. "It was a wonderful way to celebrate my university journey, and I felt truly honoured to celebrate with Dr Smith and our families. The warmth and support from everyone made the experience unforgettable."

Complementing the medal, the Distinguished Alumni Scholarship provides financial support to high-achieving

students in their final year of a conjoint degree or a double major that spans management and the sciences. The scholarships offer a valuable boost to students navigating the final stages of their academic journey.

Dr Smith, who graduated with a Master of Science in Physics with First Class Honours in 1989, was the University's first Rhodes Scholar. He completed his doctorate at Oxford University before embarking on a successful international career in the consumer goods sector, including leadership roles at Fonterra, Unilever, and Prolife Foods, where he became CEO in 2009. In 2019, he was honoured with a Distinguished Alumni Award from the University in recognition of his global business achievements.

Reflecting on his support for the University, Dr Smith says,

“The University, and the region, are where I'm closest to and I have spent a good portion of my career based in Hamilton at Prolife Foods. Supporting high-achieving students through these initiatives helps show them their value and encourages them to continue to achieve, especially in those later years of university where you start to get exposure to complex ideas and that critical thinking that is so essential in the workplace.”

Through his generosity, Dr Smith is not only honouring academic excellence but also inspiring future leaders to reach their full potential.



Dr Andrew Smith and Kate Logan

HOW CAN YOU MAKE AN IMPACT?

At the University of Waikato, every gift – large or small – helps shape the future. Whether you choose to support scholarships, research, campus development, or leave a legacy through a bequest, your generosity directly empowers students and strengthens the University's impact across Aotearoa and beyond.

HELP SHAPE THE FUTURE TODAY!

Support Future-Focused Research

From sustainability and climate resilience to artificial intelligence and healthcare innovation, our researchers are tackling the world's most pressing challenges. Your support enables them to continue their groundbreaking work and drive real-world change.

Increase Access to Education

Scholarships and prizes do more than provide financial aid – they open doors. Your donation can help remove barriers to education, giving talented students the opportunity to thrive and achieve their goals.

Make a Lasting Difference

The University's Endowment Fund ensures your gift has enduring impact. Contributions are invested in perpetuity, with returns directed to areas of greatest need. You can also leave a bequest or legacy gift, creating a meaningful contribution that lives on.



WAYS TO GIVE BACK

Non-Financial Support

Make a difference by mentoring a student, hosting an intern, or donating products or services through our Work Integrated Learning programme.

Naming Opportunities

Leave a lasting legacy by naming a scholarship, space, or initiative in recognition of your support.

Scholarships, Prizes & Awards

Help unlock potential by supporting students through targeted financial assistance.

Memorial Gifts or Bequests

Honour a loved one or plan a future gift through your will. Gifts can include financial contributions or assets such as shares, property, or cultural items.



Help shape the Future today!

www.waikato.ac.nz/donate/make-a-donation



THE UNIVERSITY OF
WAIKATO
Te Whare Wānanga o Waikato

FOUNDATION
TE POU TAUNAKI

OUR DONORS

The University of Waikato Foundation is extremely grateful to all its donors. Their generous contributions have empowered students to achieve their potential, enabled staff to conduct groundbreaking research, and significantly enhanced our economic and social impact.

INDIVIDUALS

Anonymous (5)	Peter Fountain	Dame Malvina Major	Umesh Sharma
Jon Allen	Greg Georgiev	Joanna McCracken	Anne & Brian Silverstone
Stuart Anderson	Emily Gesner	Alison McMillan	Tim Silverstone
Matt Billett	Dame Jenny Gibbs	Carole McMinn	Kenneth Stringer
Pamela Bird	Brian Jones	Scott Mitchell	Mike Walmsley
Chelsea Blackstock	Michelle Jordan-Tong	Christopher Morey	Yuxi Wang
Ciaran Brennan	Abdul Kaggwa	Allan Pearson	Linda Watson
John Cameron	Julian Knights	Beryl Plimmer	Penny White
John Davys	Sau Lau Young	John Robson	
Tony Falkenstein	Christine Lowe	Grant Scobie	

TRUSTS AND FOUNDATIONS

A Zulauf Charitable Trust	Fehl Charitable Trust	Training Trust	The Norah Howell Charitable Trust
Acorn Foundation	Frances Skeet Charitable Trust	Roy and Val Allen Charitable Trust No. 2	The Prinnbank Trust
Artemis Foundation	Freemasons Foundation	Sir William and Lady Judi Gallagher Foundation	The Waikato Clinical Psychology Educational Trust
Biome Trust	Gallagher Charitable Trust Board Incorporated	South Waikato Investment Fund Trust	The Wright Family Foundation
Braemar Charitable Trust	Glenice and John Gallagher Foundation	Te Atamira Whakaitpu Community Trust	Waikato Clinical Psychology Educational Trust
Canterbury Opera Foundation	Hamilton Multicultural Services Trust	TECT Community Trust	Waikato Graduate Women Educational Trust
D V Bryant Trust	Lilburn Trust	The Brian Perry Charitable Trust	Waitaha Charitable Trust
Dame Malvina Major Foundation	NZ Business & Parliament Trust	The Gemini Trust	
Eastern Bay of Plenty Community Foundation	R Tucker Thompson Sail		
Energy Education Trust of New Zealand			

TRULY GRATEFUL

Olive Way - 2025 Sir William and Lady Judi Gallagher Foundation Scholarship

Receiving this scholarship has been a gamechanger for my academic journey. The Sir William and Lady Judi Gallagher Foundation Scholarship has greatly relieved the stress of paying tuition fees and allows me to reduce my work hours and focus more on my courses and assignments, which I believe will improve my grades. I would like to sincerely thank the Sir William and Lady Judi Gallagher Foundation for their incredible generosity in supporting students like myself through this scholarship. This support has made a meaningful difference in my life. I am truly grateful for your investment in my future, and I'm inspired by your commitment to helping the next generation succeed and hope that I can someday reciprocate.



ORGANISATIONS

AECOM New Zealand Limited	Ensemble Ltd	MetOcean Solutions Limited - Raglan	Rainbow Village Ltd
APL Window Solutions	EnviroNZ	Millennium Science NZ Pty Ltd	Robert Jones Holdings
ASB Bank Ltd	Ernst & Young	Ministry of Education	Scitek Australia Pty Ltd
Assimilate Ltd	Evans Bailey Lawyers	Monocle Consulting Ltd	Scott Technical Instruments Ltd
Baldwin Boyle Group	Fiona Judd - Investment Fiduciary	National Institute of Water & Atmospheric Research Limited	Spark Business (Greater Waikato)
Bay of Plenty Regional Council	Fonseka PR	Nawton Community Church	Tauranga City Council
BBC Technologies	Fonterra Co-operative Group Ltd	New Zealand Defence Force	Tauranga Opera Forum
BCD Group	Foster Construction Limited	New Zealand Educational Administration and Leadership Society	Tauranga Orthopaedic Research Society Inc
Beca	Gallagher Group Limited	New Zealand Institute of Chemistry (Waikato Branch)	Te Awamutu Music Federation
Bio-Strategy Limited	Global-Pix.com	New Zealand Planning Institute Te Kōkiringa Taumata	Te Nehenehenui
Bloxam, Burnett & Olliver (BBO)	Google Asia Pacific	Oji Fibre Solutions	The Shaw Family
CCS Disability Action Waikato Inc.	Grand Lodge of NZ Freemasons	Orbit Corporate Travel	Titus Consulting Engineers
Chemist Warehouse Group	Hilda Ross Retirement Village (Residents)	Orchestras Central	Toa Civil Construction Limited
Craigs Investment Partners	Hill Laboratories Limited	Orreco	Tonkin & Taylor Limited
Craigs Investment Partners - Head Office	Howick Ltd	PDV Consultants	Torutek
Creative NZ	Huia Publishers	Perrin Ag Consultants Ltd	Tower New Zealand Limited
DairyNZ	iEngaged Ltd	PFE Consultants Ltd	Vertex Engineers
Datacom Systems Limited	Kordia Limited	Pinnacles Civil	Waikato Botanical Society
Dave Burton Planning Limited	LexisNexis	PricewaterhouseCoopers	Waikato Muslim Association
Department of Conservation	Lightwire	Priority One	Waikato Regional Council
Earthtech Consulting Limited	Mark Mole Consulting	Rabobank	Waikato Students' Union
Endace Technology Ltd	Mark T Mitchell Ltd		Whakatane Music Society
Engineering New Zealand	Meadow Mushrooms		ZURU New Zealand Ltd
Engineers for Social Responsibility	Mercury Energy Limited		

FUTURE PHARMACIST

Kaitleen Garingo - 2025 Chemist Warehouse Master of Pharmacy Scholarship

Receiving this scholarship means so much to me. Moving to Hamilton to pursue my studies meant leaving behind my life, support network, and only source of income. This scholarship provides more than financial relief, it gives me the stability and reassurance to focus on my studies without the pressure of working excessive hours just to meet basic living expenses. It lifts a huge burden, allowing me to invest my time and energy in learning and growth.

This support not only helps me succeed academically, but also reminds me that my goals are worth pursuing – and that there are people who believe in my potential.





KO TE TANGATA
FOR THE PEOPLE



THE UNIVERSITY OF
WAIKATO
Te Whare Wānanga o Waikato

WHAKAPIRI MAI
STAY CONNECTED

The University of Waikato
Foundation - Te Pou Taunaki
Private Bag 3105
Hamilton 3240, New Zealand

07 838 4446 
foundation@waikato.ac.nz 
waikato.ac.nz/foundation 