



CHOOSE WAIKATO



Why choose Waikato?



Scholarships
Worth more than \$11M



Two campuses
Study in Hamilton or Tauranga



Flexible degrees
To suit your interests and career plans



Work-Integrated Learning
In all our bachelor degrees



Subjects
More than 100 to choose from



Te Tohu Paetahi
The longest-running te reo Māori immersion programme of its kind



Student accommodation
Including halls of residence, studios and apartments



Global experiences
Through the trimester exchange programme



Free shuttle
Travel between campuses

Where is the University of Waikato?



Hamilton campus

The Hamilton campus offers beautiful gardens, on-site student accommodation, cafés, a gym, and student health services, creating a safe and supportive environment for students to live, study, and socialise.

Hamilton is a great place for students to live – it is easy to get around, and you will never be short on things to do. The city has loads of shopping centres, excellent sports facilities, an exciting night life, plus events and festivals throughout the year.



Tauranga campus

Located in one of New Zealand's most desirable coastal regions, the Tauranga campus sits in the heart of a vibrant, fast-developing city centre.

Purpose-built for connection, the campus offers close relationships with lecturers, access to dedicated support services, and compact class sizes that create a personalised learning experience. Its modern design encourages collaboration and provides a place where students, researchers, community and industry come together to share ideas and make an impact.



Open Days

Open days are an opportunity to come onto campus and see first-hand what studying at the University of Waikato is like.

- Explore study options
- Chat with staff and students
- View our campuses and Halls of Residence

Can't make it to Open Day? We have information sessions, campus tours, or you can book an appointment with one of our Future Student Advisors.



Find out more about Open Day



Future Student Advisors

Scholarships

Our scholarships reward academic ability, leadership potential, community spirit, sporting skills, and creative and performing arts talent.

School Leaver Scholarships

Te Paewai o te Rangi: Scholarship for Outstanding Academic Achievement
Up to \$30,000 over three years
(accommodation or tuition fees, plus cash)

Sir Edmund Hillary Scholarship
Up to \$30,000 over three years
(accommodation or tuition fees, plus cash)

Te Ara Whānui Scholarship
Up to \$20,000 over three years
(accommodation or tuition fees, plus cash)

Pacific Excellence Scholarship
Up to \$20,000 over three years
(accommodation or tuition fees, plus cash)

D.V. Bryant Trust University of Waikato Residential Scholarship
Up to \$10,000
(accommodation, Hamilton campus only)

Edna Money Future Pacific Leaders' School Leaver Scholarship
\$6,000 a year for up to three years

'Ko Te Tangata' School Leaver Scholarship
\$5,000
(accommodation or tuition fees)

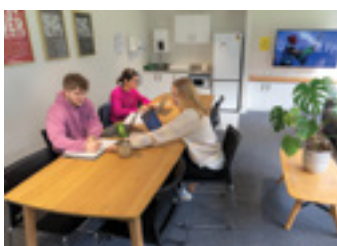
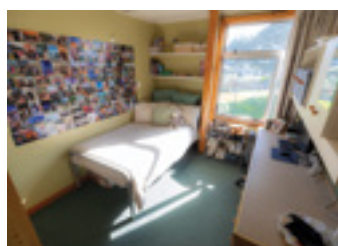
Vice-Chancellor's Access Waikato Scholarship
\$2,000 to \$10,000

Most school leaver scholarship applications close on **31 August**.

Visit waikato.ac.nz/scholarships for the most up-to-date information about what you're eligible to apply for, how to apply, closing dates and more.

Accommodation

Living in University accommodation is the perfect way to meet people and get the ultimate student experience.



Hamilton Halls of Residence

Enjoy the convenience and security of living on campus at one of our Halls of Residence. You'll get your own room that is furnished with a single bed, desk, chair, bookshelf, drawers and wardrobe.

Each hall has a lounge with TVs and computer rooms with quiet study areas. Fully catered halls have a dining room where breakfast, lunch and dinner are served.

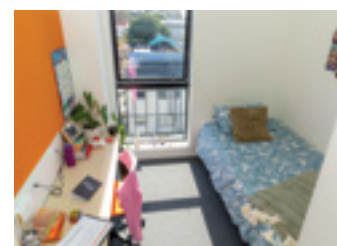


Tauranga Selwyn Street Studios

In Tauranga, Selwyn Street Studios accommodation is across the road from the University campus.

The studio-style rooms have an ensuite bathroom and are furnished with a king-single bed, desk, chair, bookshelf, wardrobe and mini fridge.

Accessibility studios are also available. Selwyn Street Studios are self-catered.



Students move into University accommodation in February (one week before classes start) in order to attend Orientation. Students move out in November, after B Trimester classes and examinations end.

Visit waikato.ac.nz/accommodation for more information.

What to expect

The first year of university is an exciting time, full of new experiences. Understanding the differences between high school and university will help to ensure a smooth transition to university life.

	High School	University
Students	500–2,000 students aged 13–18, usually from the same area	The Hamilton campus has more than 13,000 students, aged 17–60+ from all over New Zealand and around the world. The Tauranga campus has capacity for 1,500 students
Class size	Usually 20–30 people	In Hamilton, lectures can have up to 300 students. In Tauranga, class sizes are smaller so expect up to 100. Labs can have 10–25 students
Study periods	Four terms that run for about 10 weeks each	Two main trimesters that run for 12 weeks each. Optional C Trimester that runs for six weeks
Learning style	Teachers assign tasks for the class to work on. They also check your homework and monitor your progress	Lecturers explain important theories and concepts. In tutorials and labs you apply these and discuss ideas. You monitor your own progress
Assessment	You earn credits by meeting standards in assignments, tests and exams for each subject	You earn points by passing papers (which are like subjects) that count towards your qualification
Time spent in class	9am–3.30pm Monday to Friday with five or six different class periods	12–15 hours of lectures a week spread across Monday to Friday. Classes could be in-person or online

Whilst a lot of learning is done in lectures, tutorials and lab/studio work, all University of Waikato degrees incorporate Work-Integrated Learning. Students gain valuable work experience, meet industry contacts, and get the opportunity to apply knowledge in real-world situations through practicums, internships or work placements.



Get prepared for uni

Check University Entry requirements

Most students get accepted into university by achieving University Entrance (UE) from NCEA. It is important to know what the entry criteria and preferred NCEA subjects are for your chosen course to ensure you meet the requirements.

Apply on time

Visit waikato.ac.nz/apply to start your application to study. You can do this any time, but we suggest doing it at least three months before the trimester starts in March.



Contact us to talk through your options

Our flexible degrees mean you can tailor your qualification to suit your interests and career goals. You may want to consider a double major or conjoint degree. To discuss your options, email recruitment@waikato.ac.nz or phone 0800 WAIKATO (0800 924 528).

Use this checklist to make sure you are on track with choosing the right subjects, achieving University Entrance (UE) and planning your future at the University of Waikato.

Year 10

- ☐ Think about the school subjects you enjoy and how they might lead to a university degree
- ☐ Get advice from your school careers advisor on choosing NCEA subjects

Year 11

- ☐ Complete NCEA Level 1
- ☐ Achieve 10 credits in Level 1 Numeracy for UE

Year 12

- ☐ Complete NCEA Level 2
- ☐ Achieve 10 credits in Level 2 Literacy for UE
- ☐ Attend Open Day or an information session to learn more about your study options

Year 13

- ☐ Complete NCEA Level 3
- ☐ Achieve 14 credits each in three different approved subjects for UE
- ☐ Apply to study at the University of Waikato. To get started, make a Connect Account waikato.ac.nz/apply
- ☐ Apply for accommodation waikato.ac.nz/accommodation
- ☐ Look into school leaver scholarships waikato.ac.nz/schoollleaver
- ☐ Check out studylink.co.nz for information on student loans

YOUR JOURNEY FROM SCHOOL TO UNIVERSITY TO A CAREER

Arts, Design and Communication

Use insights and imagination to create, perform and communicate ideas through a variety of media, including film, images, sound and digital technologies.

NCEA Subjects

• Art/Ngā Toi

• Dance

• Design and Visual Communication

• Digital Technologies

• Drama

• English

• History

• Languages

• Media Studies

• Music

• Psychology

• Sculpture (Practical Art)

• Social Studies

• Technology/Hangarau

• Te Reo Māori

Qualifications at Waikato

• Bachelor of Arts

• Bachelor of Communication

• Bachelor of Design

• Bachelor of Global Studies

• Bachelor of Music

• Bachelor of Social Sciences

Careers

• Animator/Visual Effect Artist

• Broadcaster/Podcaster

• Community Advisor/Organiser

• Content Writer

• Designer (User Experience (UX)/Visual/Sound/Multimedia)

• Development Officer

• Diplomat

• English Language Teacher Abroad

• Events Coordinator

• Game Designer/Developer

• Interactive Media Artist

• Iwi Collections Technician

• Journalist (Multimedia/National/International)

• Māori Medium Specialist

• Motion Graphic/Web & Interactive Designer

• Museum Officer

• Musician

• Performer/Recording Artist

• Policy Analyst/Advisor

• Prompt Engineer/Writer

• Social Media Advisor

Postgraduate study or more experience

• Composer

• Editor

• Librarian

• Marketing Manager

• Pou Arahi Māori

• Producer/Director Film, TV, Web Series

• Translator/Interpreter

Business and Management

Develop new business strategies, advise and manage people, streamline operations, market products to customers, analyse economic and financial data, and shape the future of organisations.

NCEA Subjects

• Accounting

• Agribusiness

• Business Studies

• Calculus

• Design and Visual Communication

• Digital Technologies

• Economics

• Languages

• Mathematics/Pāngarau

• Psychology

• Social Studies

• Statistics

Qualifications at Waikato

• Bachelor of Banking, Finance and Technology

• Bachelor of Business

• Bachelor of Communication

Careers

• Accountant

• Agribusiness Consultant

• Banker

• Business Analyst

• Communications Advisor

• Digital Business Specialist

• Economist

• Entrepreneur

• Financial Advisor

• Investment Analyst

• Marketing Advisor

• People & Capability Business Partner

• Policy Advisor/Analyst

• Project Manager

• Public Relations Advisor

• Sharebroker

• Supply Chain/Logistics Coordinator

Postgraduate study or more experience

• Analytics & Insights Manager

• Business Development Manager

• Customer Experience Manager

• Financial Controller/Auditor

• General Manager

• Human Resource Manager

• International Trade Negotiator

• Logistics/Operations Manager

• Management Consultant

• Marketing & Communications Manager

• Strategy Manager

Community Services, Education, Law and Government

Advise clients on specialist topics, help them learn new things and develop plans. Analyse and interpret complex information and handle multiple responsibilities.

NCEA Subjects

• Business Studies

• Economics

• English

• History

• Languages

• Mathematics/Pāngarau

• Media Studies

• Psychology

• Science

• Statistics

• Technology/Hangarau

• Te Reo Māori

Qualifications at Waikato

• Bachelor of Arts

• Bachelor of Business

• Bachelor of Climate Change

• Bachelor of Communication

• Bachelor of Environmental Planning

• Bachelor of Global Studies

• Bachelor of Laws

• Bachelor of Science

• Bachelor of Social Sciences

• Bachelor of Teaching

• Te Ara Poutama Toitū Te Reo

Careers

• Archivist/Curator

• City/Urban Planner

• Community Development Planner/Advisor

• Community Worker

• Corrections Officer

• Disability Services Advocate

• Education Coordinator

• Educator/Trainer

• Employment Relations Advocate

• Environmental Planner

• Human Rights Advocate/International Aid Worker

• Iwi Development Advisor

• Lawyer/Solicitor/Barrister

• Legal Researcher

• Police Officer

• Policy Advisor/Analyst

• Politician

• Rāngai Kāwanatanga Tūmatanui (Public Service)

• Regional Community Coordinator

• Sustainability/Social Responsibility Advisor

• Teacher/Kaiako Kōhungahunga, Kura Tuatahi, Wharekura (Kura Tuarua)

Postgraduate study or more experience

• Demographer

• Development Project Manager

• Economist

• Historian

• Iwi Management Planner

• Psychologist

• Researcher

Health Science, Sport and Wellbeing

Work with people and communities to enhance hauora and address health inequities. Develop the potential of individuals, teams and communities in performance and community sport.

NCEA Subjects

• Biology

• Chemistry

• Digital Technologies

• Hauora

• Health

• Languages

• Mathematics/Pāngarau

• Physical Education

• Psychology

• Science/Pūtaiao

• Social Sciences

• Statistics

• Te Reo Māori

Qualifications at Waikato

• Bachelor of Arts

• Bachelor of Health

• Bachelor of Nursing

• Bachelor of Science

• Bachelor of Social Sciences

• Bachelor of Sport and Human Performance

Careers

• Activation Coordinator/Policy Developer

• Care/Resource Coordinator/Wellness Partner

• Child/Family Services Work

• Coach Health/Sport

• Community Development Advisor

• Community Health Worker

• Community Sports Advisor/Recreations Assistant

• Disability Services Advocate

• Engagement Advisor

• Fitness and Health Community Activator

• Fitness Coach/Consultant

• Hauora Navigator/Health Improvement Practitioner

• Healthcare/Support Worker

• Health Program Planner

• Health Protection Officer

• Kaitiaki

• Medical Lab Technician

• Nurse

• Public Health Advisor

• Sport/Recreation Admin/Group Fitness Trainer

Postgraduate study or more experience

• Counsellor (Couple, Family, Grief, Mental Health, Rehabilitation)

• Epidemiologist/Virologist

• GP/Doctor

• Health Researcher

• Midwife

• Pharmacist/Chemist

• Psychologist

• Sports Scientist

Natural Environment, Agriculture and Resources

Advise on making best use of Earth's natural resources.

NCEA Subjects

• Agricultural and Horticultural Science

• Biology

• Calculus

• Chemistry

• Earth and Space Science

• Education for Sustainability

• Geography

• History

• Mathematics/Pāngarau

• Physics

• Psychology

• Science/Pūtaiao

• Social Studies

• Te Reo Māori

Qualifications at Waikato

• Bachelor of Climate Change

• Bachelor of Engineering with Honours

• Bachelor of Environmental Planning

• Bachelor of Laws

• Bachelor of Science

• Bachelor of Science (Technology)

• Bachelor of Social Sciences

Careers

• Biodiversity Officer

• City/Urban Planner

• Climate Resilience Advisor

• Coastal Resource Officer

• Conservation Ranger

• Ecologist

• Environmental Health Officer

• Environmental Law

• Environmental Planner/Consents

• Environmental Protection Advisor

• Field Technician

• Fisheries Officer

• Geologist/Geotechnical Advisor

• Geographic Information Systems (GIS) Specialist

• Harvest Planner

• Iwi Management

• Kaitohutohu

• Natural Hazard Specialist

• Resource Development Officer

• Sustainability/Climate Advisor

• Waste Minimisation Specialist

Postgraduate study or more experience

• Agricultural Engineer

• Biologist (Molecular/Conservation)

• Demographer/Social Geographer

• Environmental Consultant

• Hatchery Manager

• Scientist (Chain Logistics, Data, Environmental, Marine, Soil, Value)

• Volcanologist

Science, Technology, Engineering, Mathematics, and Information Technology

Investigate how things work and find innovative solutions for complex challenges.

NCEA Subjects

• Agricultural and Horticultural Science

• Biology

• Calculus

• Chemistry

• Construction and Mechanical Technologies

• Digital Technologies

• Mathematics/Pāngarau

• Physics

• Psychology

• Science/Pūtaiao

• Statistics

• Technology/Hangarau

Qualifications at Waikato

• Bachelor of Science

• Bachelor of Science (Technology)

• Bachelor of Applied Computing

• Bachelor of Computer Science

• Bachelor of Climate Change

• Bachelor of Engineering with Honours

Careers

• AgriTechnology Developer

• Aquaculture Entrepreneur

• Business Analyst

• Conservation Ranger

• Database Administration

• Engineer (Automation, Agricultural, Biochemical, Civil, Chemical, Electrical/Electronic, Environmental, Materials, Mechanical, Mechatronics, Software, Usability)

• Industrial Designer

• Museum Curator

• Pest Management Advisor

• Project Manager

• Software Developer

• Systems Designer

• Technician (Biostatistician, Lab, Telecommunication)

• UI/UX Designer

• Web Architect

• Web Designer/Developer

Postgraduate study or more experience

• Cyber Security Specialist

• Marine Scientist

• Mathematician/Modeller

• Microbiologist

• Psychologist

• Researcher

• Scientist (Data/Clinical/Forensic)

Contact the University of Waikato

Prospective students, and their families and whānau can talk to our Future Student Advisors about subject and degree choices, University Entrance requirements and pathways to study. They can also provide information on the enrolment process, scholarships, accommodation, costs and support services.

Get in touch with an advisor by email, phone or scan the QR code.
recruitment@waikato.ac.nz
0800 WAIKATO



THE UNIVERSITY OF
WAIKATO
Te Whare Wānanga o Waikato