



The world of Community Engagement

- ❑ Transparency
- ❑ Community Involvement
- ❑ Informed decision making
- ❑ Effective communication

“Any process that involves the community in problem-solving or decision making and uses community input to make better decisions”
(Twyford 2006 19)”

Why engage?

“It is more than conversation, it is more than casual participation... allows us to be honoured for our contribution, and enables us to walk away with a clear understanding of the ‘what’ and ‘why’ of decisions...engagement has an implicit message of connection, joint creation and mutual responsibility”
(Twyford 2006 19)

Community (dis)engagement

Time frame
Capacity
Project boundaries
Negative experiences

Common constraints

↓

Community disengagement

Finding the right match

Inform
Consult
Involve
Collaborate
Empower

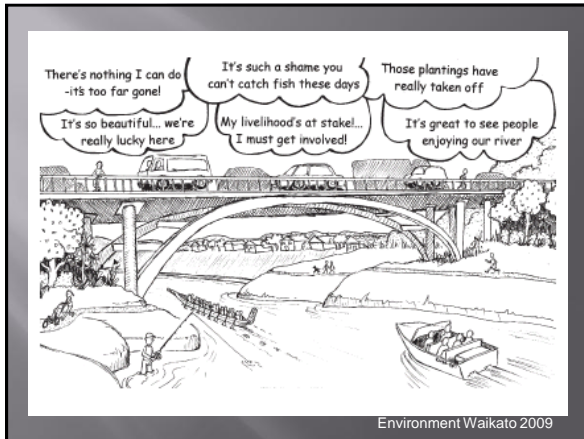
Increasing level of public impact

International Association of Public Participation <http://www.iap2.org/>

Environmental Perception

- ❑ Informs ‘real world’ actions
- ❑ Yi Fu Tuan (1974)

<http://www.flickr.com/photos/75456316@N00/13042370/>



Communities & 'The Environment'

Environmental conservation & ecological restoration

- ❑ Human values
- ❑ Framed in moral terms
- ❑ Decisions and impacts based on vast hierarchy of values



The World of Environmental Education

- ❑ Multi-disciplinary
- ❑ Life-time approach to learning
- ❑ Develop tools
- ❑ Positive environmental contribution

❑ But...

'Knowing' makes no difference

Environmental Education & Power

"One way of gaining power over land is to have one's own definition - of culture, nature, landscape, or all three - appear as the common sense one, the natural one" (Head 2000)

- ❑ Education for behaviour change

vs.

Education to enhance intellectual capacity

- ❑ Concientización (Clover 2002)
- ❑ Critical, mutual agreement

But It's Not Easy...

- ❑ "To not make judgements is to lose site of one's orientation in moral space, which is to lose one's grounding as a human being" (Smith & Deemer 2003)
- ❑ Concientización and critical, mutual engagement
 - Identifying key groups and individuals
 - Multiple agendas
 - Idealistic, but not practical?